



**ELECTRONIC COPY**

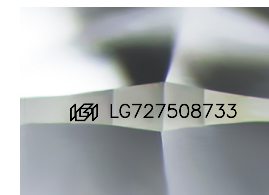
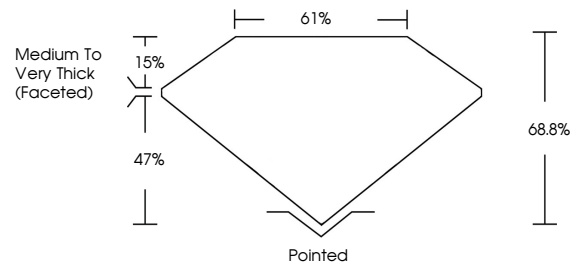
LG727508733  
Report verification at igi.org



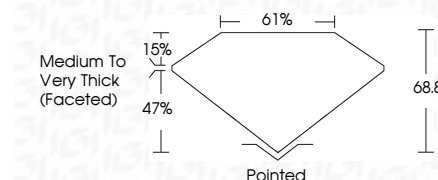
August 11, 2025  
IGI Report Number **LG727508733**  
Description **LABORATORY GROWN DIAMOND**  
Shape and Cutting Style **SQUARE CUSHION MODIFIED BRILLIANT**  
Measurements **6.49 X 6.29 X 4.33 MM**  
**GRADING RESULTS**  
Carat Weight **1.64 CARAT**  
Color Grade **FANCY INTENSE YELLOW**  
Clarity Grade **VVS 2**

August 11, 2025  
IGI Report Number **LG727508733**  
Description **LABORATORY GROWN DIAMOND**  
Shape and Cutting Style **SQUARE CUSHION MODIFIED BRILLIANT**  
Measurements **6.49 X 6.29 X 4.33 MM**  
**GRADING RESULTS**  
Carat Weight **1.64 CARAT**  
Color Grade **FANCY INTENSE YELLOW**  
Clarity Grade **VVS 2**

**PROPORTIONS**



Sample Image Used



**ADDITIONAL GRADING INFORMATION**

Polish **EXCELLENT**  
Symmetry **EXCELLENT**  
Fluorescence **NONE**  
Inscription(s) **IGI LG727508733**

Comments: This Laboratory Grown Diamond was created by Chemical Vapor Deposition (CVD) growth process.

**ADDITIONAL GRADING INFORMATION**

Polish **EXCELLENT**  
Symmetry **EXCELLENT**  
Fluorescence **NONE**  
Inscription(s) **IGI LG727508733**  
Comments: This Laboratory Grown Diamond was created by Chemical Vapor Deposition (CVD) growth process.

**COLOR**

D E F G H I J Faint Very Light Light

**CLARITY**

IF	VS <sup>1-2</sup>	VS <sup>1-2</sup>	SI <sup>1-2</sup>	I <sup>1-3</sup>
Internally Flawless	Very Very Slightly Included	Very Slightly Included	Slightly Included	Included



**IGI**



August 11, 2025  
IGI Report No **LG727508733**  
**SQUARE CUSHION MODIFIED BRILLIANT**  
6.49 X 6.29 X 4.33 MM  
1.64 CARAT  
FANCY INTENSE YELLOW  
VVS 2  
68.8%  
61%  
Medium to Very Thick (Faceted)  
Pointed  
EXCELLENT  
EXCELLENT  
NONE  
IGI LG727508733

Comments: This Laboratory Grown Diamond was created by Chemical Vapor Deposition (CVD) growth process.