



**ELECTRONIC COPY**

LG727506918  
Report verification at igi.org



August 19, 2025  
IGI Report Number **LG727506918**  
Description **LABORATORY GROWN DIAMOND**  
Shape and Cutting Style **RECTANGULAR CUSHION MIXED CUT**  
Measurements **13.90 X 10.56 X 6.69 MM**  
**GRADING RESULTS**  
Carat Weight **10.05 CARATS**  
Color Grade **FANCY INTENSE PINK**  
Clarity Grade **VS 1**

**LABORATORY GROWN DIAMOND REPORT**

August 19, 2025  
IGI Report Number **LG727506918**  
Description **LABORATORY GROWN DIAMOND**  
Shape and Cutting Style **RECTANGULAR CUSHION MIXED CUT**  
Measurements **13.90 X 10.56 X 6.69 MM**

**GRADING RESULTS**

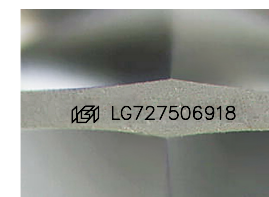
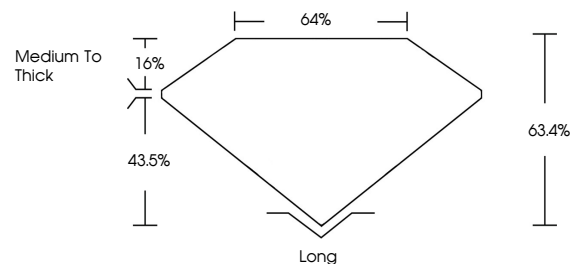
Carat Weight **10.05 CARATS**  
Color Grade **FANCY INTENSE PINK**  
Clarity Grade **VS 1**

**ADDITIONAL GRADING INFORMATION**

Polish **EXCELLENT**  
Symmetry **EXCELLENT**  
Fluorescence **STRONG**  
Inscription(s) **IGI LG727506918**

Comments: This Laboratory Grown Diamond was created by Chemical Vapor Deposition (CVD) growth process. Indications of post-growth treatment.

**PROPORTIONS**



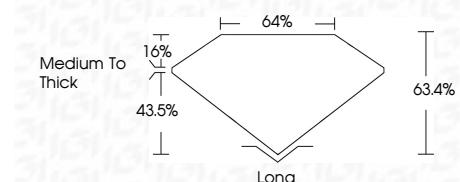
Sample Image Used

**COLOR**

D E F G H I J Faint Very Light Light

**CLARITY**

IF	VS <sup>1-2</sup>	VS <sup>1-2</sup>	SI <sup>1-2</sup>	I <sup>1-3</sup>
Internally Flawless	Very Very Slightly Included	Very Slightly Included	Slightly Included	Included



**ADDITIONAL GRADING INFORMATION**

Polish **EXCELLENT**  
Symmetry **EXCELLENT**  
Fluorescence **STRONG**  
Inscription(s) **IGI LG727506918**  
Comments: This Laboratory Grown Diamond was created by Chemical Vapor Deposition (CVD) growth process. Indications of post-growth treatment.



**IGI**



August 19, 2025  
IGI Report No LG727506918  
RECTANGULAR CUSHION MIXED CUT  
10.05 CARATS  
FANCY INTENSE PINK  
VS 1  
63.4%  
43.5%  
1.6%  
Medium to Thick  
Long  
EXCELLENT  
EXCELLENT  
STRONG  
IGI LG727506918

Comments: This Laboratory Grown Diamond was created by Chemical Vapor Deposition (CVD) growth process. Indications of post-growth treatment.