



**ELECTRONIC COPY**

LG727504340  
Report verification at igi.org



August 11, 2025

IGI Report Number **LG727504340**

Description **LABORATORY GROWN DIAMOND**

Shape and Cutting Style **EMERALD CUT**

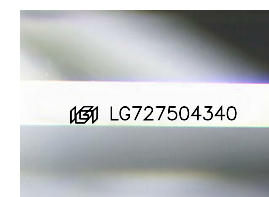
Measurements **17.47 X 11.43 X 7.26 MM**

**GRADING RESULTS**

Carat Weight **15.10 CARATS**

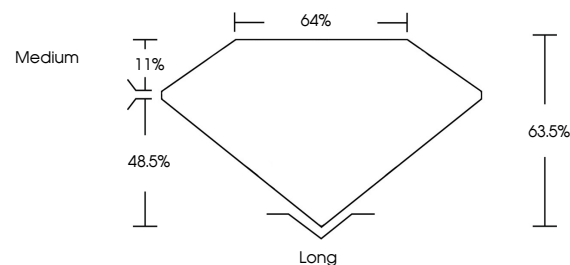
Color Grade **G**

Clarity Grade **VVS 2**

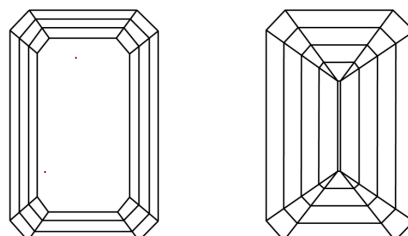


Sample Image Used

**PROPORTIONS**



**CLARITY CHARACTERISTICS**



**KEY TO SYMBOLS**

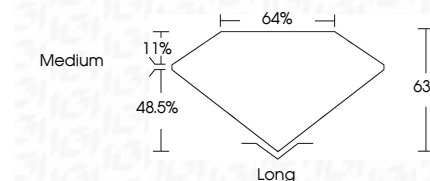
Red symbols indicate internal characteristics.  
Green symbols indicate external characteristics.

**COLOR**

D E F G H I J Faint Very Light Light

**CLARITY**

FL	IF	VS <sup>1-2</sup>	VS <sup>1-2</sup>	SI <sup>1-2</sup>	I <sup>1-3</sup>
Flawless	Internally Flawless	Very Very Slightly Included	Very Slightly Included	Slightly Included	Included



**ADDITIONAL GRADING INFORMATION**

Polish **EXCELLENT**

Symmetry **EXCELLENT**

Fluorescence **NONE**

Inscription(s) **IGI LG727504340**

Comments: This Laboratory Grown Diamond was created by Chemical Vapor Deposition (CVD) growth process.  
Type IIa



**IGI**



August 11, 2025  
IGI Report No LG727504340  
EMERALD CUT

15.10 CARATS  
G

17.47 X 11.43 X 7.26 MM  
VVS 2  
63.5%  
48.5%  
11%  
Medium

Long  
EXCELLENT  
EXCELLENT  
NONE  
IGI LG727504340

Comments: This Laboratory Grown Diamond was created by Chemical Vapor Deposition (CVD) growth process.  
Type IIa