

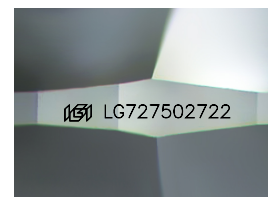
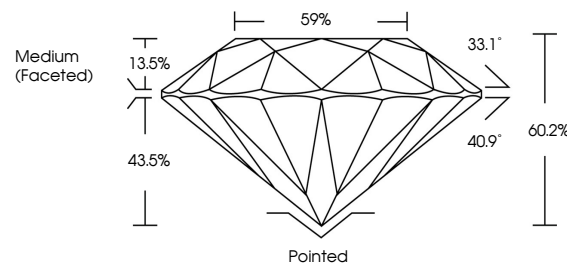


ELECTRONIC COPY

LABORATORY GROWN DIAMOND REPORT

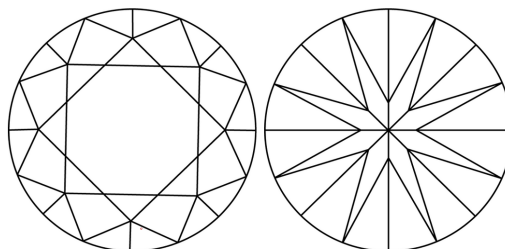
LG727502722
Report verification at igi.org

PROPORTIONS



Sample Image Used

CLARITY CHARACTERISTICS



KEY TO SYMBOLS

Red symbols indicate internal characteristics.
Green symbols indicate external characteristics.

COLOR

D E F G H I J Faint Very Light Light

CLARITY

IF WS¹⁻² VS¹⁻² SI¹⁻² |¹⁻³

Internally Flawless	Very Very Slightly Included	Very Slightly Included	Slightly Included	Included
------------------------	--------------------------------	---------------------------	----------------------	----------

LABORATORY GROWN DIAMOND REPORT



August 8, 2025

IGI Report Number **LG727502722**Description **LABORATORY GROWN DIAMOND**Shape and Cutting Style **ROUND BRILLIANT**

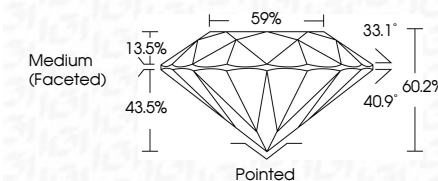
Measurements 8.28 - 8.32 X 5.00 MM

GRADING RESULTS

Carat Weight **2.11 CARATS**

Color Grade **F**Clarity Grade **VVS 2**

Cut Grade **IDEAL**



ADDITIONAL GRADING INFORMATION

Polish **EXCELLENT**Symmetry **EXCELLENT**Fluorescence **NONE**Inscription(s)  LG727502722

Comments: This Laboratory Grown Diamond was created by Chemical Vapor Deposition (CVD) growth process.
Type IIa



© IGI 2020, International Gemological Institute

FD - 10 20

www.igi.org



THIS DOCUMENT WAS PRODUCED WITH THE FOLLOWING SECURITY MEASURES: SPECIAL DOCUMENT PAPER, INK SCREENS, WATERMARK BACKGROUND DESIGNS, HOLOGRAM AND OTHER SECURITY FEATURES NOT LISTED AND DO EXCEED DOCUMENT SECURITY INDUSTRY GUIDELINES

August 8, 2025	GJ Report No LG7279272		August 8, 2025		GJ Report No LG7279272	
ROUND BRILLIANT						
2.11 CARATS						
Color Weight						
Color Grade						
Clarity Grade						
Cut Grade						
Depth						
Table						
Girdle						
Medium (Faceted)						
WS 2						
ID54L						
612P						
59%						
Pointed						
EXCELLENT						
EXCELLENT						
Symmetry						
Fluorescence						
Inscriptions(s)						
NONE						
169 LG72792722						
Comments:						
Grain Diamond was						
checked by Chemical Vapor Deposition						
(CVD) Growth process.						
Type IIG						