



**ELECTRONIC COPY**

LG727502613  
Report verification at igi.org



August 8, 2025  
IGI Report Number **LG727502613**  
Description **LABORATORY GROWN DIAMOND**  
Shape and Cutting Style **BAGUETTE**  
Measurements **10.31 X 5.05 X 3.33 MM**  
**GRADING RESULTS**  
Carat Weight **2.00 CARATS**  
Color Grade **E**  
Clarity Grade **INTERNALLY FLAWLESS**

**LABORATORY GROWN DIAMOND REPORT**

August 8, 2025  
IGI Report Number **LG727502613**  
Description **LABORATORY GROWN DIAMOND**  
Shape and Cutting Style **BAGUETTE**  
Measurements **10.31 X 5.05 X 3.33 MM**

**GRADING RESULTS**

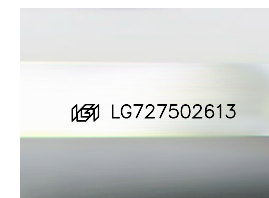
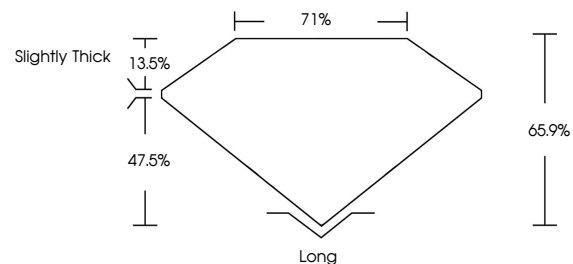
Carat Weight **2.00 CARATS**  
Color Grade **E**  
Clarity Grade **INTERNALLY FLAWLESS**

**ADDITIONAL GRADING INFORMATION**

Polish **EXCELLENT**  
Symmetry **EXCELLENT**  
Fluorescence **NONE**  
Inscription(s) **IGI LG727502613**

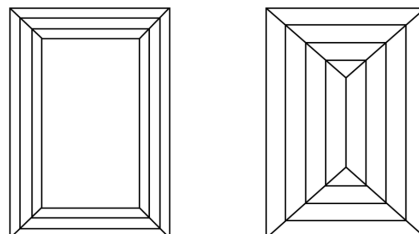
Comments: This Laboratory Grown Diamond was created by Chemical Vapor Deposition (CVD) growth process.  
Type IIa

**PROPORTIONS**



Sample Image Used

**CLARITY CHARACTERISTICS**



**KEY TO SYMBOLS**

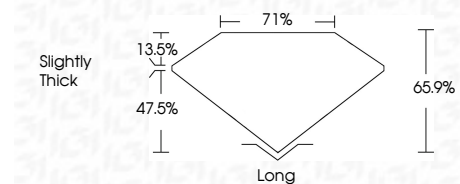
Red symbols indicate internal characteristics.  
Green symbols indicate external characteristics.

**COLOR**

D E F G H I J Faint Very Light Light

**CLARITY**

IF	VS <sup>1-2</sup>	VS <sup>1-2</sup>	SI <sup>1-2</sup>	I <sup>1-3</sup>
Internally Flawless	Very Very Slightly Included	Very Slightly Included	Slightly Included	Included



**ADDITIONAL GRADING INFORMATION**

Polish **EXCELLENT**  
Symmetry **EXCELLENT**  
Fluorescence **NONE**  
Inscription(s) **IGI LG727502613**  
Comments: This Laboratory Grown Diamond was created by Chemical Vapor Deposition (CVD) growth process.  
Type IIa



August 8, 2025  
IGI Report No LG727502613  
**BAGUETTE**  
2.00 CARATS  
E  
10.31 X 5.05 X 3.33 MM  
Color Grade  
Clarity Grade  
Depth  
Table  
Girdle  
Slightly Thick  
Culet  
Long  
Polish  
Symmetry  
Fluorescence  
Inscription(s)  
EXCELLENT  
EXCELLENT  
NONE  
IGI LG727502613  
Comments: This Laboratory Grown Diamond was created by Chemical Vapor Deposition (CVD) growth process.  
Type IIa