

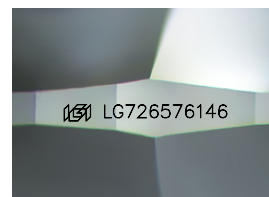
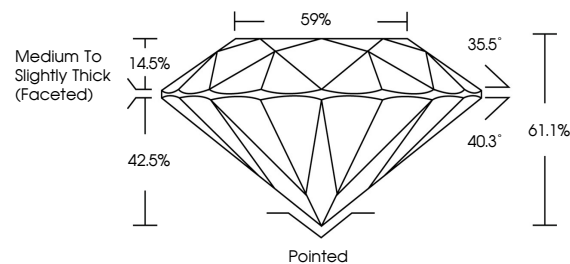


ELECTRONIC COPY

LABORATORY GROWN DIAMOND REPORT

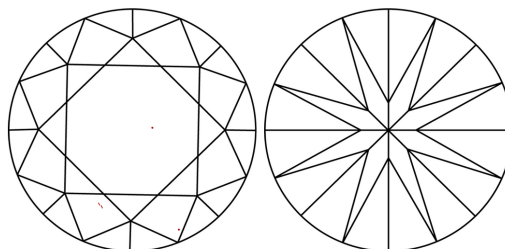
LG726576146
Report verification at igi.org

PROPORTIONS



Sample Image Used

CLARITY CHARACTERISTICS



KEY TO SYMBOLS

Red symbols indicate internal characteristics.
Green symbols indicate external characteristics.

COLOR

D E F G H I J Faint Very Light Light

CLARITY

IF WS¹⁻² VS¹⁻² SI¹⁻² |¹⁻³

Internally Flawless	Very Very Slightly Included	Very Slightly Included	Slightly Included	Included
------------------------	--------------------------------	---------------------------	----------------------	----------

LABORATORY GROWN DIAMOND REPORT



August 4, 2025

IGI Report Number **LG726576146**

Description	LABORATORY GROWN DIAMOND
-------------	--------------------------

Shape and Cutting Style **ROUND BRILLIANT**

Measurements 9.21 - 9.25 X 5.64 MM

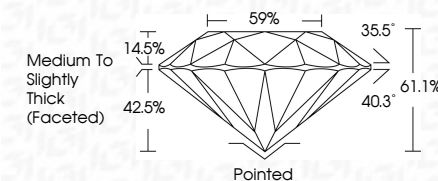
GRADING RESULTS

Carat Weight **3.00 CARATS**

Color Grade E

Clarity Grade **VVS 2**

Cut Grade **IDEAL**



ADDITIONAL GRADING INFORMATION

Polish **EXCELLENT**Symmetry **EXCELLENT**

Fluorescence NONI

Inscription(s) LG726576146

Comments: This Laboratory Grown Diamond was created by Chemical Vapor Deposition (CVD) growth process.
Type IIa



IG



© IGI 2020, International Gemological Institute

FD - 10 20

www.igi.org



THIS DOCUMENT WAS PRODUCED WITH THE FOLLOWING SECURITY MEASURES: SPECIAL DOCUMENT PAPER, INK SCREENS, WATERMARK, BACKGROUND DESIGNS, HOLOGRAM AND OTHER SECURITY FEATURES NOT LISTED AND DO EXCEED DOCUMENT SECURITY INDUSTRY GUIDELINE

August 4, 2025	G Report No. G726570 I46	
ROUND BRILLIANT		
9.21 - 9.28 X 6.41 MM		
Carat Weight	3.00 CARATS	
Color Grade	E	
Clarity Grade	VVS 2	
Cut Grade	IDEAL	
Depth	61.1%	
Table	69%	
Girdle	Medium To Slightly Thick (Faceted)	
Culet	Patched	
Polish	EXCELLENT	
Symmetry	EXCELLENT	
Fluorescence	NONE	
Treatment(s)	#GJL726570 I46	
Comments:		
	This Laboratory Grown Diamond was created by Chemical Vapor Deposition (CVD) growth process.	
	Type IIa	