



ELECTRONIC COPY

LABORATORY GROWN DIAMOND REPORT

August 2, 2025
IGI Report Number LG726573018
Description LABORATORY GROWN DIAMOND
Shape and Cutting Style CUT CORNERED RECTANGULAR MODIFIED BRILLIANT
Measurements 13.15 X 9.08 X 6.12 MM

GRADING RESULTS

Carat Weight 6.51 CARATS
Color Grade F
Clarity Grade VVS 2

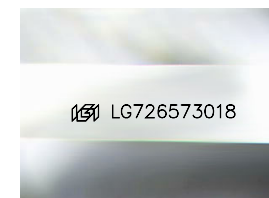
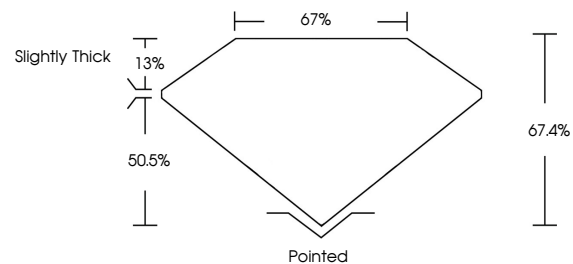
ADDITIONAL GRADING INFORMATION

Polish EXCELLENT
Symmetry EXCELLENT
Fluorescence NONE

Inscription(s) LG726573018

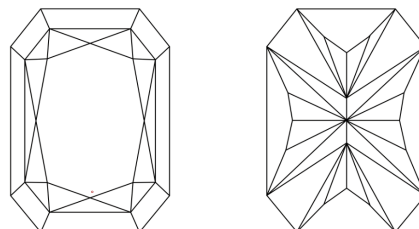
Comments: This Laboratory Grown Diamond was created by Chemical Vapor Deposition (CVD) growth process.
Type IIa

PROPORTIONS



Sample Image Used

CLARITY CHARACTERISTICS



KEY TO SYMBOLS

Red symbols indicate internal characteristics.
Green symbols indicate external characteristics.

COLOR

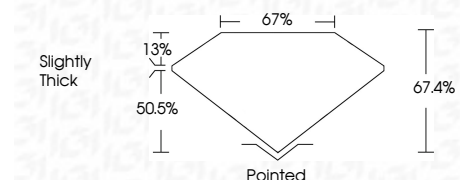
D E F G H I J Faint Very Light Light

CLARITY

IF VS¹⁻² VS¹⁻² SI¹⁻² I¹⁻³
Internally Flawless Very Very Slightly Included Very Slightly Included Slightly Included Included



August 2, 2025
IGI Report Number LG726573018
Description LABORATORY GROWN DIAMOND
Shape and Cutting Style CUT CORNERED RECTANGULAR MODIFIED BRILLIANT
Measurements 13.15 X 9.08 X 6.12 MM
GRADING RESULTS
Carat Weight 6.51 CARATS
Color Grade F
Clarity Grade VVS 2



ADDITIONAL GRADING INFORMATION

Polish EXCELLENT
Symmetry EXCELLENT
Fluorescence NONE
Inscription(s) LG726573018
Comments: This Laboratory Grown Diamond was created by Chemical Vapor Deposition (CVD) growth process.
Type IIa



IGI



August 2, 2025
IGI Report No LG726573018
CUT CORNERED RECT. MODIFIED BRILLIANT
13.15 X 9.08 X 6.12 MM
6.51 CARATS
F
VVS 2
67.4%
67%
Slightly Thick
Pointed
EXCELLENT
EXCELLENT
NONE
Inscription(s) LG726573018

Comments: This Laboratory Grown Diamond was created by Chemical Vapor Deposition (CVD) growth process.
Type IIa