



**INTERNATIONAL
GEMOLOGICAL
INSTITUTE**

ELECTRONIC COPY

LABORATORY GROWN DIAMOND REPORT

August 13, 2025
 IGI Report Number **LG726572838**
 Description **LABORATORY GROWN DIAMOND**
 Shape and Cutting Style **ROUND BRILLIANT**
 Measurements **3.84 - 3.89 X 2.32 MM**

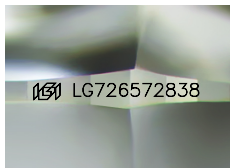
GRADING RESULTS

Carat Weight **0.21 CARAT**
 Color Grade **FANCY VIVID PINK**
 Clarity Grade **SI 1**
 Cut Grade **EXCELLENT**

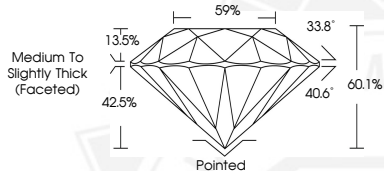
ADDITIONAL GRADING INFORMATION

Polish **EXCELLENT**
 Symmetry **VERY GOOD**
 Fluorescence **SLIGHT**
 Inscription(s) **IGI LG726572838**

Comments: This Laboratory Grown Diamond was created by High Pressure High Temperature (HPHT) growth process. Indications of post-growth treatment.



Sample Image Used



August 13, 2025
 IGI Report Number **LG726572838**
 ROUND BRILLIANT
 LABORATORY GROWN DIAMOND
 3.84 - 3.89 X 2.32 MM
 Carat Weight **0.21 CARAT**
 Color Grade **FANCY VIVID PINK**
 Clarity Grade **SI 1**
 Cut Grade **EXCELLENT**
 Polish **EXCELLENT**
 Symmetry **VERY GOOD**
 Fluorescence **SLIGHT**
 Inscription(s) **IGI LG726572838**

Comments: This Laboratory Grown Diamond was created by High Pressure High Temperature (HPHT) growth process. Indications of post-growth treatment.



August 13, 2025
 IGI Report Number **LG726572838**
 ROUND BRILLIANT
 LABORATORY GROWN DIAMOND
 3.84 - 3.89 X 2.32 MM
 Carat Weight **0.21 CARAT**
 Color Grade **FANCY VIVID PINK**
 Clarity Grade **SI 1**
 Cut Grade **EXCELLENT**
 Polish **EXCELLENT**
 Symmetry **VERY GOOD**
 Fluorescence **SLIGHT**
 Inscription(s) **IGI LG726572838**

Comments: This Laboratory Grown Diamond was created by High Pressure High Temperature (HPHT) growth process. Indications of post-growth treatment.



THIS DOCUMENT WAS PRODUCED WITH THE FOLLOWING SECURITY MEASURES: SPECIAL DOCUMENT PAPER, INK SCREENS, WATERMARK, BACKGROUND DESIGNS, HOLOGRAM AND OTHER SECURITY FEATURES NOT LISTED AND DO EXCEED DOCUMENT SECURITY INDUSTRY GUIDELINES.

For terms & conditions and to verify this report, please visit www.igi.org