



INTERNATIONAL GEMOLOGICAL INSTITUTE

ELECTRONIC COPY

LABORATORY GROWN DIAMOND REPORT

August 13, 2025

IGI Report Number

LG726572780

Description

LABORATORY GROWN DIAMOND

Shape and Cutting Style

ROUND BRILLIANT

Measurements

3.73 - 3.78 X 2.29 MM

GRADING RESULTS

Carat Weight

0.20 CARAT

Color Grade

FANCY VIVID PINK

Clarity Grade

VS 2

Cut Grade

EXCELLENT

ADDITIONAL GRADING INFORMATION

Polish

EXCELLENT

Symmetry

VERY GOOD

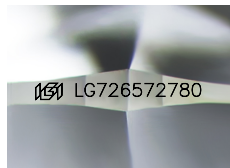
Fluorescence

SLIGHT

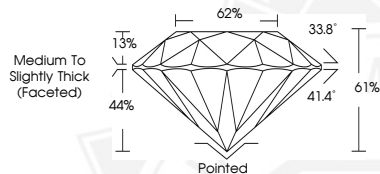
Inscription(s)

IGI LG726572780

Comments: This Laboratory Grown Diamond was created by High Pressure High Temperature (HPHT) growth process. Indications of post-growth treatment.



Sample Image Used



August 13, 2025

IGI Report Number LG726572780

ROUND BRILLIANT

LABORATORY GROWN DIAMOND

3.73 - 3.78 X 2.29 MM

Carat Weight 0.20 CARAT

Color Grade FANCY VIVID PINK

Clarity Grade VS 2

Cut Grade EXCELLENT

Polish EXCELLENT

Symmetry VERY GOOD

Fluorescence SLIGHT

Inscription(s) IGI LG726572780

Comments: This Laboratory Grown Diamond was created by High Pressure High Temperature (HPHT) growth process. Indications of post-growth treatment.



August 13, 2025

IGI Report Number LG726572780

ROUND BRILLIANT

LABORATORY GROWN DIAMOND

3.73 - 3.78 X 2.29 MM

Carat Weight 0.20 CARAT

Color Grade FANCY VIVID PINK

Clarity Grade VS 2

Cut Grade EXCELLENT

Polish EXCELLENT

Symmetry VERY GOOD

Fluorescence SLIGHT

Inscription(s) IGI LG726572780

Comments: This Laboratory Grown Diamond was created by High Pressure High Temperature (HPHT) growth process. Indications of post-growth treatment.



THIS DOCUMENT WAS PRODUCED WITH THE FOLLOWING SECURITY MEASURES: SPECIAL DOCUMENT PAPER, INK SCREENS, WATERMARK, BACKGROUND DESIGNS, HOLOGRAM AND OTHER SECURITY FEATURES NOT LISTED AND DO EXCEED DOCUMENT SECURITY INDUSTRY GUIDELINES.

For terms & conditions and to verify this report, please visit www.igi.org