



ELECTRONIC COPY

LG726564565
Report verification at igi.org



August 8, 2025

IGI Report Number **LG726564565**

Description **LABORATORY GROWN DIAMOND**

Shape and Cutting Style **ROUND BRILLIANT**

Measurements **18.69 - 18.76 X 11.52 MM**

GRADING RESULTS

Carat Weight **25.02 CARATS**

Color Grade **G**

Clarity Grade **VS 2**

Cut Grade **IDEAL**

August 8, 2025

IGI Report Number **LG726564565**

Description **LABORATORY GROWN DIAMOND**

Shape and Cutting Style **ROUND BRILLIANT**

Measurements **18.69 - 18.76 X 11.52 MM**

GRADING RESULTS

Carat Weight **25.02 CARATS**

Color Grade **G**

Clarity Grade **VS 2**

Cut Grade **IDEAL**

ADDITIONAL GRADING INFORMATION

Polish **EXCELLENT**

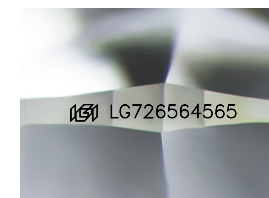
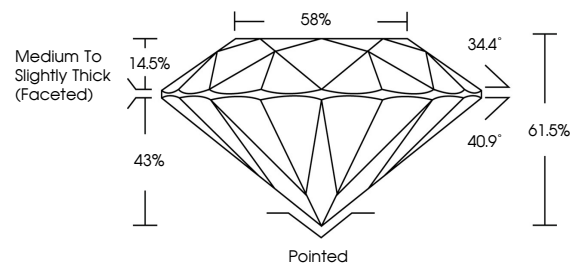
Symmetry **EXCELLENT**

Fluorescence **NONE**

Inscription(s) **IGI LG726564565**

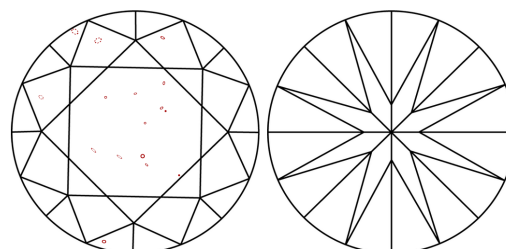
Comments: HEARTS & ARROWS
This Laboratory Grown Diamond was created by
Chemical Vapor Deposition (CVD) growth process.
Type IIa

PROPORTIONS



Sample Image Used

CLARITY CHARACTERISTICS



KEY TO SYMBOLS

Red symbols indicate internal characteristics.
Green symbols indicate external characteristics.



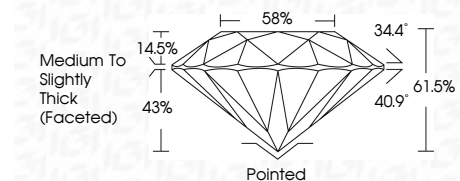
COLOR

D E F G H I J Faint Very Light Light

CLARITY

IF VS¹⁻² VS¹⁻² SI¹⁻² I¹⁻³

Internally Flawless Very Very Slightly Included Very Slightly Included Slightly Included Included



ADDITIONAL GRADING INFORMATION

Polish **EXCELLENT**

Symmetry **EXCELLENT**

Fluorescence **NONE**

Inscription(s) **IGI LG726564565**

Comments: HEARTS & ARROWS
This Laboratory Grown Diamond was created by
Chemical Vapor Deposition (CVD) growth process.
Type IIa



August 8, 2025
IGI Report No LG726564565
ROUND BRILLIANT

18.69 - 18.76 X 11.52 MM

25.02 CARATS
G

Color Grade
VS 2
IDEAL

Depth
61.5%

Table
58%

Girdle
Medium To Slightly Thick (Faceted)

Culet
Pointed

Polish
EXCELLENT

Symmetry
EXCELLENT

Fluorescence
NONE

Inscription(s)
IGI LG726564565

Comments:
Hearts & Arrows
This Laboratory Grown Diamond was
created by Chemical Vapor Deposition
(CVD) growth process.
Type IIa