

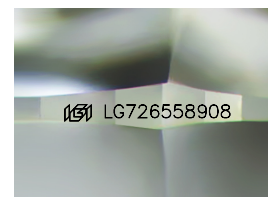
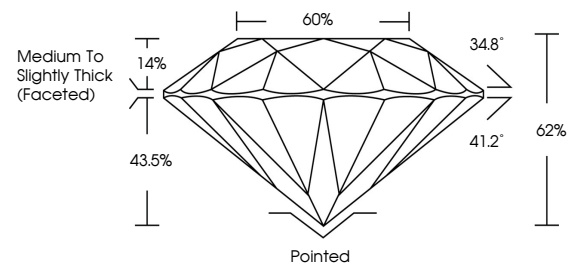


ELECTRONIC COPY

LABORATORY GROWN DIAMOND REPORT

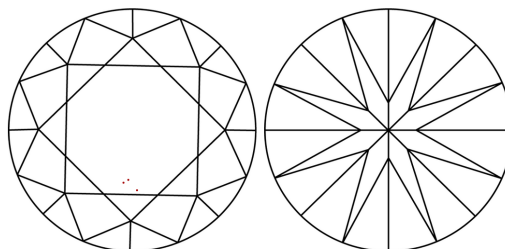
LG726558908
Report verification at igi.org

PROPORTIONS



Sample Image Used

CLARITY CHARACTERISTICS



KEY TO SYMBOLS

Red symbols indicate internal characteristics.
Green symbols indicate external characteristics.

COLOR

D E F G H I J Faint Very Light Light

CLARITY

IF WS¹⁻² VS¹⁻² SI¹⁻² |¹⁻³

Internally Flawless	Very Very Slightly Included	Very Slightly Included	Slightly Included	Included
------------------------	--------------------------------	---------------------------	----------------------	----------

LABORATORY GROWN DIAMOND REPORT



August 5, 2025

IGI Report Number **LG726558908**Description **LABORATORY GROWN DIAMOND**Shape and Cutting Style **ROUND BRILLIANT**

Measurements	8.62 - 8.66 X 5.36 MM
--------------	-----------------------

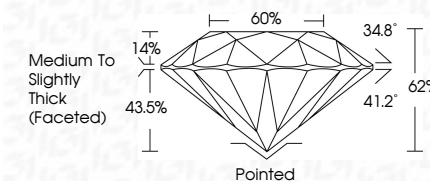
GRADING RESULTS

Carat Weight **2.50 CARATS**

Color Grade D

Clarity Grade WS 1

Cut Grade **IDEAL**



ADDITIONAL GRADING INFORMATION

Polish **EXCELLENT**Symmetry **EXCELLENT**Fluorescence **NONE**Inscription(s) LG726558908

Comments: This Laboratory Grown Diamond was created by Chemical Vapor Deposition (CVD) growth process.

Type IIa



© IGI 2020, International Gemological Institute

FD - 10 20



THIS DOCUMENT WAS PRODUCED WITH THE FOLLOWING SECURITY MEASURES: SPECIAL DOCUMENT PAPER, INK SCREENS, WATERMARK, BACKGROUND DESIGNS, HOLOGRAM AND OTHER SECURITY FEATURES NOT LISTED AND DO EXCEED DOCUMENT SECURITY INDUSTRY GUIDELINES

www.igi.org

August 5, 2026	Report No. LG7265908	2.50 CARATS
ROUND BRILLIANT	D	VVS 1
Color Grade	Clarity Grade	IDEAL
Carat Weight	Depth	62%
4.62 - 4.66 X 5.36 MM	Table	65%
	Girdle	Medium to Slightly Thick (Faceted)
	Culet	Paired
	Polish	EXCELLENT
	Symmetry	EXCELLENT
	Fluorescence	NONE
	Inscriptions(s)	#61 LG7265908

Comments:
The Laboratory Grown Diamond was created using a High Pressure High Temperature (HPHT) growth process.
Type IIG