



**ELECTRONIC COPY**

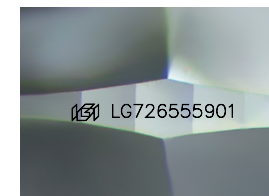
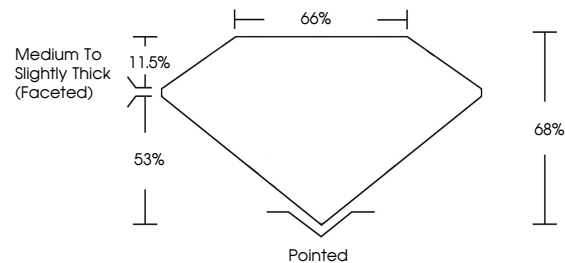
LG726555901  
Report verification at igi.org



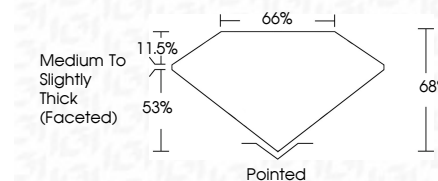
August 6, 2025  
IGI Report Number **LG726555901**  
Description **LABORATORY GROWN DIAMOND**  
Shape and Cutting Style **CUSHION MODIFIED BRILLIANT**  
Measurements **7.18 X 6.50 X 4.42 MM**  
**GRADING RESULTS**  
Carat Weight **1.73 CARAT**  
Color Grade **D**  
Clarity Grade **VVS 1**

August 6, 2025  
IGI Report Number **LG726555901**  
Description **LABORATORY GROWN DIAMOND**  
Shape and Cutting Style **CUSHION MODIFIED BRILLIANT**  
Measurements **7.18 X 6.50 X 4.42 MM**  
**GRADING RESULTS**  
Carat Weight **1.73 CARAT**  
Color Grade **D**  
Clarity Grade **VVS 1**

**PROPORTIONS**



Sample Image Used



**ADDITIONAL GRADING INFORMATION**

Polish **EXCELLENT**  
Symmetry **EXCELLENT**  
Fluorescence **NONE**  
Inscription(s) **IGI LG726555901**

Comments: As Grown - No indication of post-growth treatment.  
This Laboratory Grown Diamond was created by High Pressure High Temperature (HPHT) growth process. Type II

**ADDITIONAL GRADING INFORMATION**

Polish **EXCELLENT**  
Symmetry **EXCELLENT**  
Fluorescence **NONE**  
Inscription(s) **IGI LG726555901**  
Comments: As Grown - No indication of post-growth treatment.  
This Laboratory Grown Diamond was created by High Pressure High Temperature (HPHT) growth process. Type II

**COLOR**

D E F G H I J Faint Very Light Light

**CLARITY**

IF	VS <sup>1-2</sup>	VS <sup>1-2</sup>	SI <sup>1-2</sup>	I <sup>1-3</sup>
Internally Flawless	Very Very Slightly Included	Very Slightly Included	Slightly Included	Included



August 6, 2025  
IGI Report No **LG726555901**  
**CUSHION MODIFIED BRILLIANT**  
7.18 X 6.50 X 4.42 MM  
1.73 CARAT  
D  
VVS 1  
68%  
65%  
Medium to Slightly Thick (Faceted)  
Pointed  
EXCELLENT  
EXCELLENT  
NONE  
IGI LG726555901

Comments: As Grown - No indication of post-growth treatment.  
This Laboratory Grown Diamond was created by High Pressure High Temperature (HPHT) growth process. Type II