



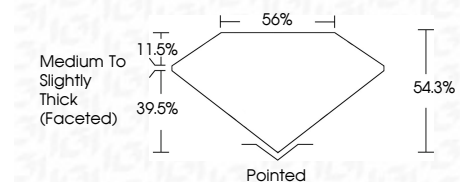
ELECTRONIC COPY

LG726552190
Report verification at igi.org



August 12, 2025
IGI Report Number **LG726552190**
Description **LABORATORY GROWN DIAMOND**
Shape and Cutting Style **MODIFIED LEAF BRILLIANT**
Measurements **10.98 X 8.79 X 4.77 MM**

GRADING RESULTS
Carat Weight **2.69 CARATS**
Color Grade **FANCY INTENSE PINK**
Clarity Grade **VVS 2**



ADDITIONAL GRADING INFORMATION
Polish **EXCELLENT**
Symmetry **VERY GOOD**
Fluorescence **STRONG**
Inscription(s) **IGI LG726552190**
Comments: This Laboratory Grown Diamond was created by Chemical Vapor Deposition (CVD) growth process. Indications of post-growth treatment.



August 12, 2025
IGI Report No LG726552190
MODIFIED LEAF BRILLIANT
10.98 X 8.79 X 4.77 MM
2.69 CARATS
FANCY INTENSE PINK
VVS 2
54.3%
11.5%
39.5%
Medium to Slightly Thick (Faceted)
Pointed
EXCELLENT
VERY GOOD
STRONG
IGI LG726552190
Comments: This Laboratory Grown Diamond was created by Chemical Vapor Deposition (CVD) growth process. Indications of post-growth treatment.

LABORATORY GROWN DIAMOND REPORT

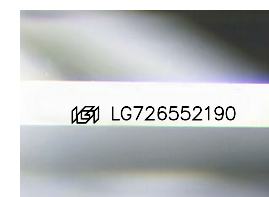
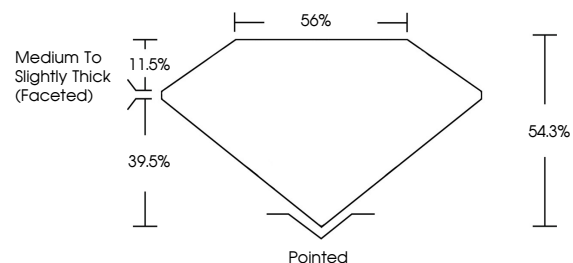
August 12, 2025
IGI Report Number **LG726552190**
Description **LABORATORY GROWN DIAMOND**
Shape and Cutting Style **MODIFIED LEAF BRILLIANT**
Measurements **10.98 X 8.79 X 4.77 MM**

GRADING RESULTS
Carat Weight **2.69 CARATS**
Color Grade **FANCY INTENSE PINK**
Clarity Grade **VVS 2**

ADDITIONAL GRADING INFORMATION
Polish **EXCELLENT**
Symmetry **VERY GOOD**
Fluorescence **STRONG**
Inscription(s) **IGI LG726552190**

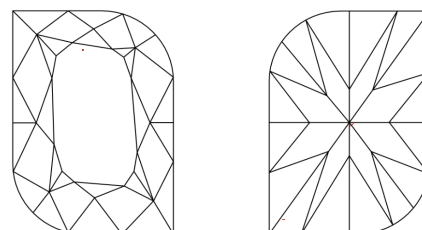
Comments: This Laboratory Grown Diamond was created by Chemical Vapor Deposition (CVD) growth process. Indications of post-growth treatment.

PROPORTIONS



Sample Image Used

CLARITY CHARACTERISTICS



KEY TO SYMBOLS

Red symbols indicate internal characteristics.
Green symbols indicate external characteristics.

COLOR

D E F G H I J Faint Very Light Light

CLARITY

IF	WS ¹⁻²	VS ¹⁻²	SI ¹⁻²	I ¹⁻³
Internally Flawless	Very Very Slightly Included	Very Slightly Included	Slightly Included	Included