



ELECTRONIC COPY

LG726549765
Report verification at igi.org



August 11, 2025

IGI Report Number **LG726549765**

Description **LABORATORY GROWN DIAMOND**

Shape and Cutting Style **SQUARE EMERALD CUT**

Measurements **5.56 X 5.53 X 3.52 MM**

GRADING RESULTS

Carat Weight **1.05 CARAT**

Color Grade **FANCY INTENSE BLUE**

Clarity Grade **VVS 2**

August 11, 2025
IGI Report Number **LG726549765**
Description **LABORATORY GROWN DIAMOND**
Shape and Cutting Style **SQUARE EMERALD CUT**
Measurements **5.56 X 5.53 X 3.52 MM**

GRADING RESULTS

Carat Weight **1.05 CARAT**

Color Grade **FANCY INTENSE BLUE**

Clarity Grade **VVS 2**

ADDITIONAL GRADING INFORMATION

Polish **EXCELLENT**

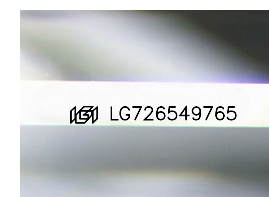
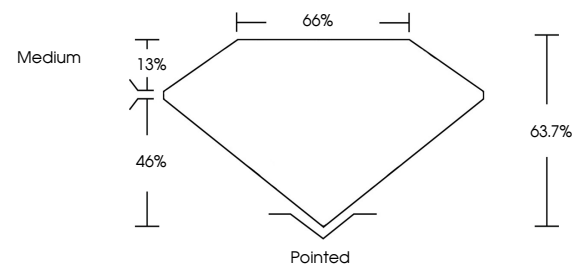
Symmetry **EXCELLENT**

Fluorescence **NONE**

Inscription(s) **IGI LG726549765**

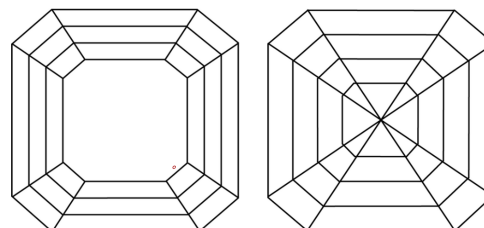
Comments: This Laboratory Grown Diamond was created by High Pressure High Temperature (HPHT) growth process. Indications of post-growth treatment.

PROPORTIONS



Sample Image Used

CLARITY CHARACTERISTICS



KEY TO SYMBOLS

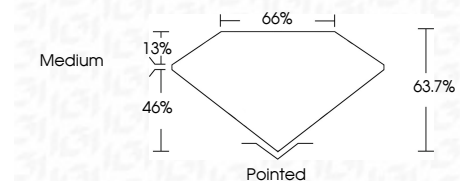
Red symbols indicate internal characteristics.
Green symbols indicate external characteristics.

COLOR

D E F G H I J Faint Very Light Light

CLARITY

IF	VS ¹⁻²	VS ¹⁻²	SI ¹⁻²	I ¹⁻³
Internally Flawless	Very Very Slightly Included	Very Slightly Included	Slightly Included	Included



ADDITIONAL GRADING INFORMATION

Polish **EXCELLENT**

Symmetry **EXCELLENT**

Fluorescence **NONE**

Inscription(s) **IGI LG726549765**

Comments: This Laboratory Grown Diamond was created by High Pressure High Temperature (HPHT) growth process. Indications of post-growth treatment.



IGI



August 11, 2025	IGI Report No LG726549765	SQUARE EMERALD CUT	1.05 CARAT	FANCY INTENSE BLUE	VVS 2	63.7%	66%	Medium	Pointed	EXCELLENT	EXCELLENT	NONE	IGI LG726549765
			Carat Weight	Color Grade	Clarity Grade	Depth	Table	Girdle	Culet	Polish	Symmetry	Fluorescence	Inscription(s)

Comments: This Laboratory Grown Diamond was created by High Pressure High Temperature (HPHT) growth process. Indications of post-growth treatment.