



ELECTRONIC COPY

LG726548685
Report verification at igi.org



August 5, 2025
IGI Report Number LG726548685
Description LABORATORY GROWN DIAMOND
Shape and Cutting Style RECTANGULAR CUSHION MIXED CUT
Measurements 10.43 X 7.08 X 4.29 MM
GRADING RESULTS
Carat Weight 2.92 CARATS
Color Grade E
Clarity Grade VVS 2

LABORATORY GROWN DIAMOND REPORT

August 5, 2025
IGI Report Number LG726548685
Description LABORATORY GROWN DIAMOND
Shape and Cutting Style RECTANGULAR CUSHION MIXED CUT
Measurements 10.43 X 7.08 X 4.29 MM

GRADING RESULTS

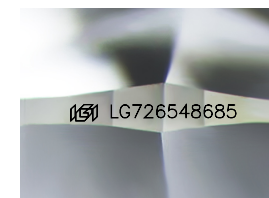
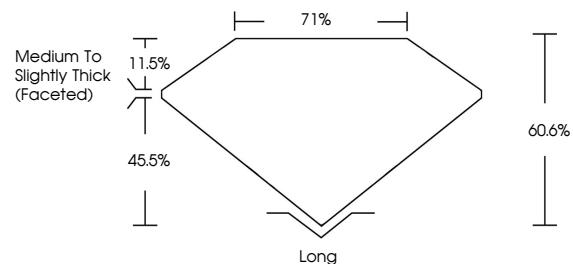
Carat Weight 2.92 CARATS
Color Grade E
Clarity Grade VVS 2

ADDITIONAL GRADING INFORMATION

Polish EXCELLENT
Symmetry EXCELLENT
Fluorescence NONE
Inscription(s) LG726548685

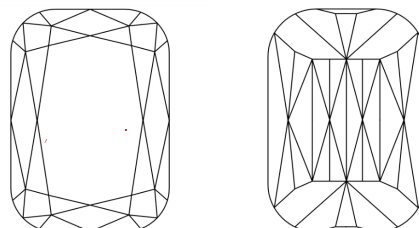
Comments: This Laboratory Grown Diamond was created by Chemical Vapor Deposition (CVD) growth process. Type IIa

PROPORTIONS



Sample Image Used

CLARITY CHARACTERISTICS



KEY TO SYMBOLS

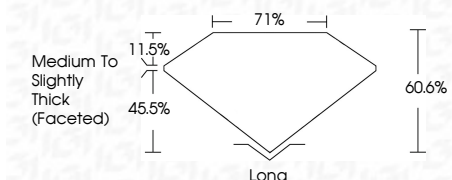
Red symbols indicate internal characteristics.
Green symbols indicate external characteristics.

COLOR

D E F G H I J Faint Very Light Light

CLARITY

IF VVS 1-2 VS 1-2 SI 1-2 I 1-3
Internally Flawless Very Very Slightly Included Very Slightly Included Slightly Included Included



ADDITIONAL GRADING INFORMATION

Polish EXCELLENT
Symmetry EXCELLENT
Fluorescence NONE
Inscription(s) LG726548685
Comments: This Laboratory Grown Diamond was created by Chemical Vapor Deposition (CVD) growth process. Type IIa



August 5, 2025
IGI Report No LG726548685
RECTANGULAR CUSHION MIXED CUT
2.92 CARATS E
Carat Weight 2.92 CARATS
Color Grade E
Clarity Grade VVS 2
Depth 45.5%
Table 71%
Girdle Medium to Slightly Thick (Faceted)
Culet Long
Polish EXCELLENT
Symmetry EXCELLENT
Fluorescence NONE
Inscription(s) LG726548685
Comments: This Laboratory Grown Diamond was created by Chemical Vapor Deposition (CVD) growth process. Type IIa