



ELECTRONIC COPY

LABORATORY GROWN DIAMOND REPORT

August 20, 2025	
IGI Report Number	LG726545753
Description	LABORATORY GROWN DIAMOND
Shape and Cutting Style	ROUND BRILLIANT
Measurements	8.24 - 8.33 X 4.80 MM

GRADING RESULTS

Carat Weight	2.01 CARATS
Color Grade	FANCY INTENSE PINK
Clarity Grade	VS 1
Cut Grade	EXCELLENT

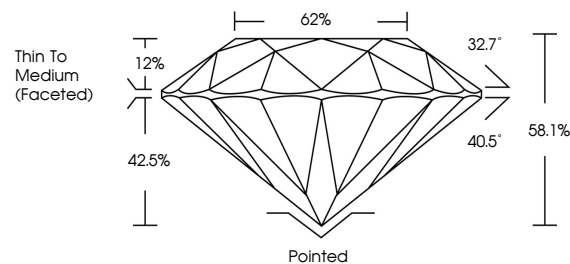
ADDITIONAL GRADING INFORMATION

Polish	EXCELLENT
Symmetry	EXCELLENT
Fluorescence	SLIGHT
Inscription(s)	 LG726545753

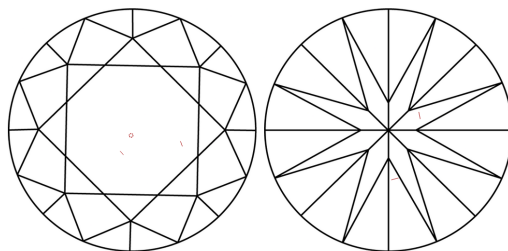
Comments: This Laboratory Grown Diamond was created by High Pressure High Temperature (HPHT) growth process.
Indications of post-growth treatment.

LG726545753
Report verification at igi.org

PROPORTIONS

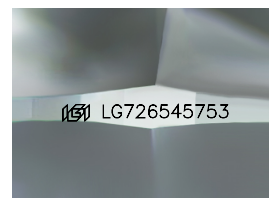


CLARITY CHARACTERISTICS



KEY TO SYMBOLS

Red symbols indicate internal characteristics.
Green symbols indicate external characteristics.



Sample Image Used

COLOR

D E F G H I J Faint Very Light Light

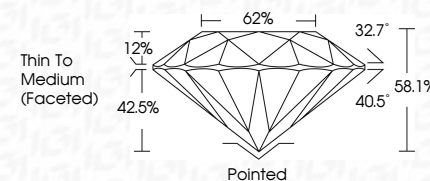
CLARITY

IF WS¹⁻² VS¹⁻² SI¹⁻² I¹⁻³

Internally Flawless	Very Very Slightly Included	Very Slightly Included	Slightly Included	Included
------------------------	--------------------------------	---------------------------	----------------------	----------



August 20, 2025	
IGI Report Number	LG726545753
Description	LABORATORY GROWN DIAMOND
Shape and Cutting Style	ROUND BRILLIANT
Measurements	8.24 - 8.33 X 4.80 MM
GRADING RESULTS	
Carat Weight	2.01 CARATS
Color Grade	FANCY INTENSE PINK
Clarity Grade	VS 1
Cut Grade	EXCELLENT



ADDITIONAL GRADING INFORMATION

Polish	EXCELLENT
Symmetry	EXCELLENT
Fluorescence	SLIGHT
Inscription(s)	(16) LG726545753

Comments: This Laboratory Grown Diamond was created by High Pressure High Temperature (HPHT) growth process.
Indications of post-growth treatment.



IG



© IGI 2020, International Gemological Institute

FD - 10 20



THIS DOCUMENT WAS PRODUCED WITH THE FOLLOWING SECURITY MEASURES: SPECIAL DOCUMENT PAPER, INK SCREENS, WATERMARK, BACKGROUND DESIGNS, HOLOGRAM AND OTHER SECURITY FEATURES NOT LISTED AND DO EXCEED DOCUMENT SECURITY INDUSTRY GUIDELINES

www.igi.org

August 20, 2025
IGI Report No LG726545753
ROUND BRILLIANT

8.24 - 8.33 X 4.80 MM					
Carat Weight	Color Grade	Clarity Grade	Cut Grade	Depth	Girdle
2.01 CARATS	FANCY INTENSE PINK	VSI	EXCELLENT	68.1%	62%
				Thin To Medium (face-to-o)	
				Culet	Pointed
				Polish	EXCELLENT
				Symmetry	EXCELLENT
				Fluorescence	SLIGHT

Comments:
This Laboratory Grown Diamond was created by High Pressure High Temperature (HPHT) growth process.