



ELECTRONIC COPY

LG726542273
Report verification at igi.org



September 12, 2025
IGI Report Number **LG726542273**
Description **LABORATORY GROWN DIAMOND**
Shape and Cutting Style **CUSHION MODIFIED BRILLIANT**
Measurements **10.32 X 7.64 X 4.97 MM**
GRADING RESULTS
Carat Weight **2.79 CARATS**
Color Grade **E**
Clarity Grade **VVS 2**

September 12, 2025
IGI Report Number **LG726542273**
Description **LABORATORY GROWN DIAMOND**
Shape and Cutting Style **CUSHION MODIFIED BRILLIANT**
Measurements **10.32 X 7.64 X 4.97 MM**

GRADING RESULTS

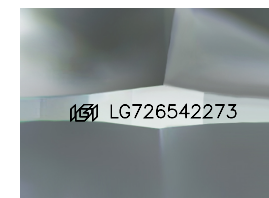
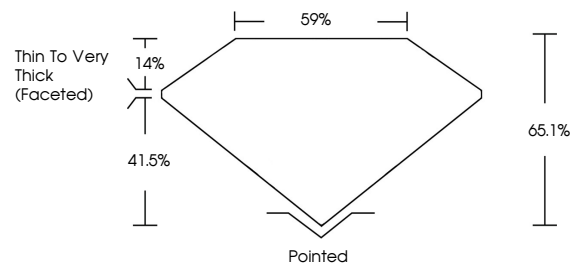
Carat Weight **2.79 CARATS**
Color Grade **E**
Clarity Grade **VVS 2**

ADDITIONAL GRADING INFORMATION

Polish **EXCELLENT**
Symmetry **EXCELLENT**
Fluorescence **NONE**
Inscription(s) **(IGI) LG726542273**

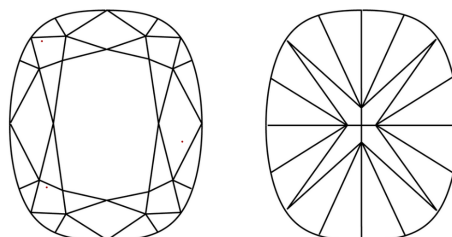
Comments: This Laboratory Grown Diamond was created by Chemical Vapor Deposition (CVD) growth process. Type IIa

PROPORTIONS



Sample Image Used

CLARITY CHARACTERISTICS



KEY TO SYMBOLS

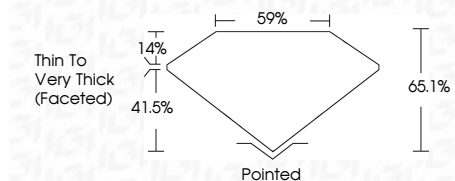
Red symbols indicate internal characteristics.
Green symbols indicate external characteristics.

COLOR

D E F G H I J Faint Very Light Light

CLARITY

IF	VS ¹⁻²	VS ¹⁻²	SI ¹⁻²	I ¹⁻³
Internally Flawless	Very Very Slightly Included	Very Slightly Included	Slightly Included	Included



ADDITIONAL GRADING INFORMATION

Polish **EXCELLENT**
Symmetry **EXCELLENT**
Fluorescence **NONE**
Inscription(s) **(IGI) LG726542273**
Comments: This Laboratory Grown Diamond was created by Chemical Vapor Deposition (CVD) growth process. Type IIa



September 12, 2025
IGI Report No LG726542273
CUSHION MODIFIED BRILLIANT
10.32 X 7.64 X 4.97 MM
2.79 CARATS
E
VVS 2
65.1%
41.5%
Thin to Very Thick (Faceted)
Pointed
EXCELLENT
EXCELLENT
NONE
(IGI) LG726542273
Comments: This Laboratory Grown Diamond was created by Chemical Vapor Deposition (CVD) growth process. Type IIa