



ELECTRONIC COPY

LG726541309
Report verification at igi.org



September 5, 2025
IGI Report Number **LG726541309**
Description **LABORATORY GROWN DIAMOND**
Shape and Cutting Style **SQUARE CUSHION MODIFIED BRILLIANT**
Measurements **5.97 X 5.93 X 4.08 MM**
GRADING RESULTS
Carat Weight **1.40 CARAT**
Color Grade **FANCY INTENSE GREEN**
Clarity Grade **VVS 1**

LABORATORY GROWN DIAMOND REPORT

September 5, 2025
IGI Report Number **LG726541309**
Description **LABORATORY GROWN DIAMOND**
Shape and Cutting Style **SQUARE CUSHION MODIFIED BRILLIANT**
Measurements **5.97 X 5.93 X 4.08 MM**

GRADING RESULTS

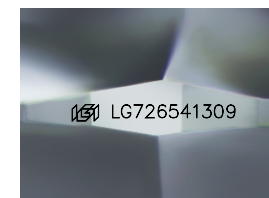
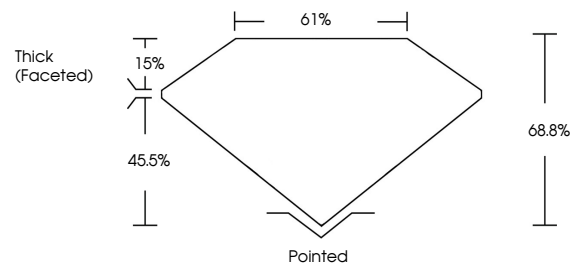
Carat Weight **1.40 CARAT**
Color Grade **FANCY INTENSE GREEN**
Clarity Grade **VVS 1**

ADDITIONAL GRADING INFORMATION

Polish **EXCELLENT**
Symmetry **EXCELLENT**
Fluorescence **NONE**
Inscription(s) **IGI LG726541309**

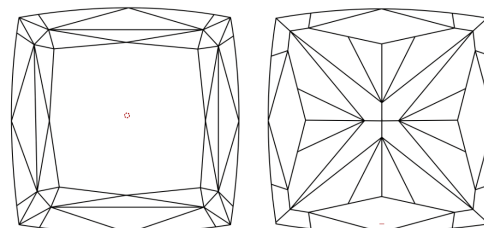
Comments: This Laboratory Grown Diamond was created by High Pressure High Temperature (HPHT) growth process. Indications of post-growth treatment.

PROPORTIONS



Sample Image Used

CLARITY CHARACTERISTICS



KEY TO SYMBOLS

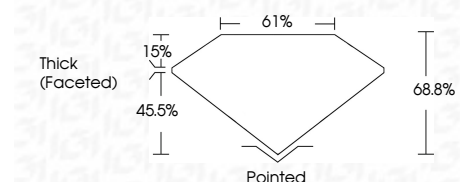
Red symbols indicate internal characteristics.
Green symbols indicate external characteristics.

COLOR

D E F G H I J Faint Very Light Light

CLARITY

IF	VS ¹⁻²	VS ¹⁻²	SI ¹⁻²	I ¹⁻³
Internally Flawless	Very Very Slightly Included	Very Slightly Included	Slightly Included	Included



ADDITIONAL GRADING INFORMATION

Polish **EXCELLENT**
Symmetry **EXCELLENT**
Fluorescence **NONE**
Inscription(s) **IGI LG726541309**
Comments: This Laboratory Grown Diamond was created by High Pressure High Temperature (HPHT) growth process. Indications of post-growth treatment.



September 5, 2025
IGI Report No LG726541309
SQUARE CUSHION MODIFIED BRILLIANT
1.40 CARAT
FANCY INTENSE GREEN
VVS 1
5.97 X 5.93 X 4.08 MM
68.8%
61%
Thick (Faceted)
Pointed
EXCELLENT
EXCELLENT
NONE
IGI LG726541309
Comments: This Laboratory Grown Diamond was created by High Pressure High Temperature (HPHT) growth process. Indications of post-growth treatment.