



**ELECTRONIC COPY**

LG726540435  
Report verification at igi.org



September 11, 2025

IGI Report Number **LG726540435**

Description **LABORATORY GROWN DIAMOND**

Shape and Cutting Style **ROUND BRILLIANT**

Measurements **8.74 - 8.78 X 5.31 MM**

**GRADING RESULTS**

Carat Weight **2.51 CARATS**

Color Grade **G**

Clarity Grade **VVS 2**

September 11, 2025  
IGI Report Number **LG726540435**  
Description **LABORATORY GROWN DIAMOND**  
Shape and Cutting Style **ROUND BRILLIANT**  
Measurements **8.74 - 8.78 X 5.31 MM**

**GRADING RESULTS**

Carat Weight **2.51 CARATS**

Color Grade **G**

Clarity Grade **VVS 2**

**ADDITIONAL GRADING INFORMATION**

Polish **EXCELLENT**

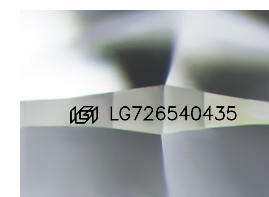
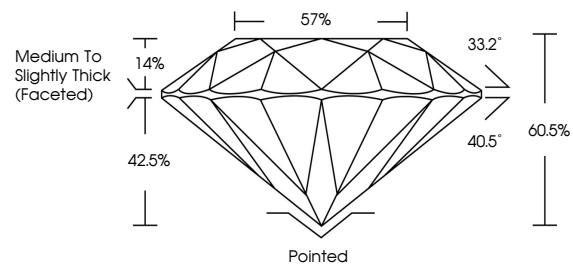
Symmetry **EXCELLENT**

Fluorescence **NONE**

Inscription(s) **IGI LG726540435**

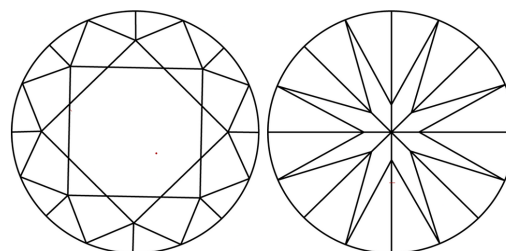
Comments: This Laboratory Grown Diamond was created by Chemical Vapor Deposition (CVD) growth process.  
Type IIa

**PROPORTIONS**



Sample Image Used

**CLARITY CHARACTERISTICS**



**KEY TO SYMBOLS**

Red symbols indicate internal characteristics.  
Green symbols indicate external characteristics.

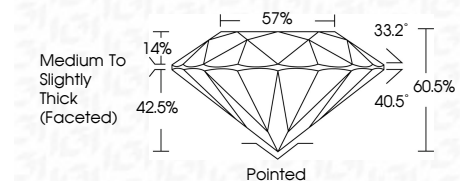
**COLOR**

D E F G H I J Faint Very Light Light

**CLARITY**

IF VS<sup>1-2</sup> VS<sup>1-2</sup> SI<sup>1-2</sup> I<sup>1-3</sup>

Internally Flawless Very Very Slightly Included Very Slightly Included Slightly Included Included



**ADDITIONAL GRADING INFORMATION**

Polish **EXCELLENT**

Symmetry **EXCELLENT**

Fluorescence **NONE**

Inscription(s) **IGI LG726540435**

Comments: This Laboratory Grown Diamond was created by Chemical Vapor Deposition (CVD) growth process.  
Type IIa



September 11, 2025	IGI Report No LG726540435	2.51 CARATS	G	VVS 2	60.5%	37%	Pointed	EXCELLENT	EXCELLENT	NONE	IGI LG726540435
ROUND BRILLIANT	8.74 - 8.78 X 5.31 MM	Carat Weight	Color Grade	Clarity Grade	Table	Girdle	Medium to Slightly Thick (Faceted)	Polish	Symmetry	Fluorescence	Inscription(s)

Comments: This Laboratory Grown Diamond was created by Chemical Vapor Deposition (CVD) growth process.  
Type IIa