



ELECTRONIC COPY

LG726540274
Report verification at igi.org



September 1, 2025

IGI Report Number **LG726540274**

Description **LABORATORY GROWN DIAMOND**

Shape and Cutting Style **CUT CORNERED
RECTANGULAR MODIFIED
BRILLIANT**

Measurements **6.78 X 5.04 X 3.45 MM**

GRADING RESULTS

Carat Weight **1.12 CARAT**

Color Grade **FANCY LIGHT GRAYISH BLUE**

Clarity Grade **VVS 2**

LABORATORY GROWN DIAMOND REPORT

September 1, 2025

IGI Report Number **LG726540274**

Description **LABORATORY GROWN DIAMOND**

Shape and Cutting Style **CUT CORNERED RECTANGULAR
MODIFIED BRILLIANT**

Measurements **6.78 X 5.04 X 3.45 MM**

GRADING RESULTS

Carat Weight **1.12 CARAT**

Color Grade **FANCY LIGHT GRAYISH BLUE**

Clarity Grade **VVS 2**

ADDITIONAL GRADING INFORMATION

Polish **EXCELLENT**

Symmetry **VERY GOOD**

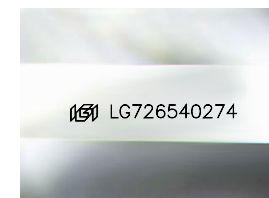
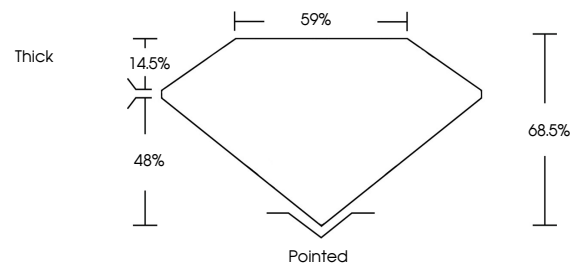
Fluorescence **NONE**

Inscription(s) **IGI LG726540274**

Comments: This Laboratory Grown Diamond was created by High Pressure High Temperature (HPHT) growth process.

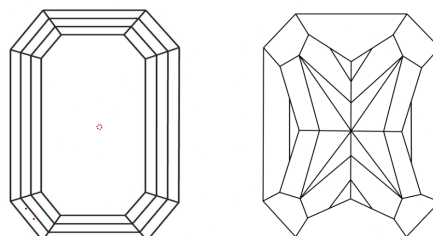
Indications of post-growth treatment.

PROPORTIONS



Sample Image Used

CLARITY CHARACTERISTICS



KEY TO SYMBOLS

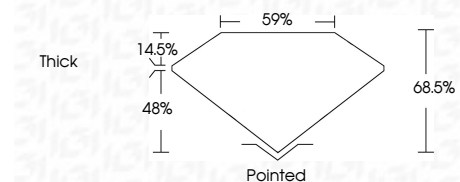
Red symbols indicate internal characteristics.
Green symbols indicate external characteristics.

COLOR

D E F G H I J Faint Very Light Light

CLARITY

IF	VS ¹⁻²	VS ¹⁻²	SI ¹⁻²	I ¹⁻³
Internally Flawless	Very Very Slightly Included	Very Slightly Included	Slightly Included	Included



ADDITIONAL GRADING INFORMATION

Polish **EXCELLENT**

Symmetry **VERY GOOD**

Fluorescence **NONE**

Inscription(s) **IGI LG726540274**

Comments: This Laboratory Grown Diamond was created by High Pressure High Temperature (HPHT) growth process.
Indications of post-growth treatment.



September 1, 2025
IGI Report No LG726540274
CUT CORNERED RECT. MODIFIED BRILLIANT
6.78 X 5.04 X 3.45 MM
1.12 CARAT
FANCY LIGHT GRAYISH BLUE
VVS 2
68.5%
59%
Thick
Pointed
EXCELLENT
VERY GOOD
NONE
IGI LG726540274

Comments: This Laboratory Grown Diamond was created by High Pressure High Temperature (HPHT) growth process.
Indications of post-growth treatment.