

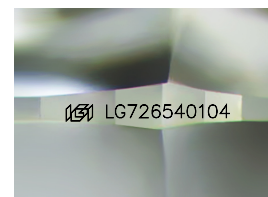
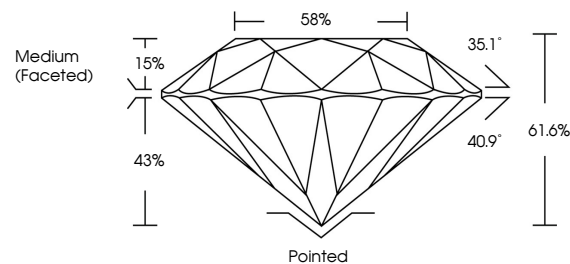


**ELECTRONIC COPY**

## LABORATORY GROWN DIAMOND REPORT

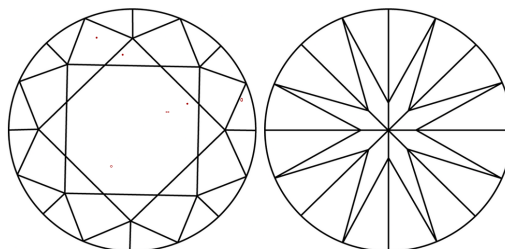
LG726540104  
Report verification at [igi.org](https://igi.org)

## PROPORTIONS



Sample Image Used

## CLARITY CHARACTERISTICS



### KEY TO SYMBOLS

Red symbols indicate internal characteristics.  
Green symbols indicate external characteristics.

## COLOR

D E F G H I J Faint Very Light Light

## CLARITY

IF WS<sup>1-2</sup> VS<sup>1-2</sup> SI<sup>1-2</sup> |<sup>1-3</sup>

Internally Flawless	Very Very Slightly Included	Very Slightly Included	Slightly Included	Included
------------------------	--------------------------------	---------------------------	----------------------	----------

## LABORATORY GROWN DIAMOND REPORT



August 29, 2025

IGI Report Number **LG726540104**Description **LABORATORY GROWN DIAMOND**Shape and Cutting Style **ROUND BRILLIANT**

Measurements 8.13 - 8.16 X 5.02 MM

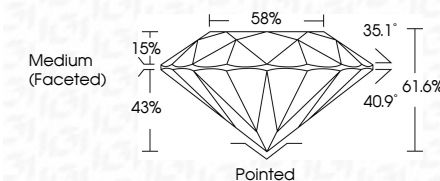
## GRADING RESULTS

Carat Weight **2.05 CARATS**

Color Grade E

Clarity Grade VS 1

Cut Grade **IDEAL**



### ADDITIONAL GRADING INFORMATION

Polish **EXCELLENT**Symmetry **EXCELLENT**

Fluorescence NONI

Inscription(s)  LG726540104

Comments: This Laboratory Grown Diamond was created by Chemical Vapor Deposition (CVD) growth process.  
Type IIa



© IGI 2020, International Gemological Institute

FD - 10 20

**www.igi.org**



THIS DOCUMENT WAS PRODUCED WITH THE FOLLOWING SECURITY MEASURES: SPECIAL DOCUMENT PAPER, INK SCREENS, WATERMARK, BACKGROUND DESIGNS, HOLOGRAM, AND OTHER SECURITY FEATURES NOT LISTED AND DO EXCEED DOCUMENT SECURITY INDUSTRY GUIDELINES.

<b>August 29, 2026</b>	<b>GJ Report No LG725640104</b>
<b>ROUND BRILLIANT</b>	
<b>Color Grade</b>	<b>2.05 CARATS</b>
<b>Clarity Grade</b>	<b>VSI 1</b>
<b>Cut Grade</b>	<b>IDEAL</b>
<b>Depth</b>	<b>61.0%</b>
<b>Table</b>	<b>88%</b>
<b>Girdle</b>	<b>Medium (Faceted)</b>
<b>Culet</b>	<b>Poished</b>
<b>Polish</b>	<b>EXCELLENT</b>
<b>Symmetry</b>	<b>EXCELLENT</b>
<b>Fluorescence</b>	<b>NONE</b>
<b>Inscriptions(s)</b>	<b>ISSI LG725640104</b>

**Comments:**  
 This Certified Natural Growth Diamond was  
 created by Chemical Vapor Deposition  
 (CVD) growth process.  
 Type IIa