



**ELECTRONIC COPY**

## LABORATORY GROWN DIAMOND REPORT

October 13, 2025	
IGI Report Number	LG726537991
Description	LABORATORY GROWN DIAMOND
Shape and Cutting Style	ROUND BRILLIANT
Measurements	6.52 - 6.54 X 4.08 MM

## GRADING RESULTS

Carat Weight	1.07 CARAT
Color Grade	D
Clarity Grade	INTERNALLY FLAWLESS
Cut Grade	IDEAL

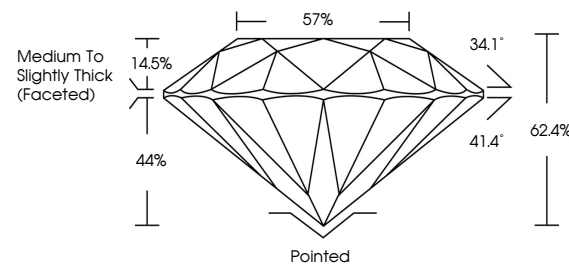
### ADDITIONAL GRADING INFORMATION

Polish	EXCELLENT
Symmetry	EXCELLENT
Fluorescence	NONE
Inscription(s)	 LG726537991

Comments: As Grown - No indication of post-growth treatment.  
This Laboratory Grown Diamond was created by High Pressure High Temperature (HPHT) growth process.  
Type II

LG726537991  
Report verification at [igi.org](https://igi.org)

## PROPORTIONS

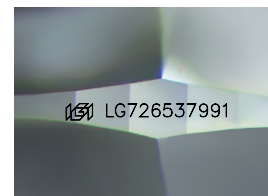


## CLARITY CHARACTERISTICS



## KEY TO SYMBOLS

Red symbols indicate internal characteristics.  
Green symbols indicate external characteristics.



Sample Image Used

## COLOR

D E F G H I J Faint Very Light Light

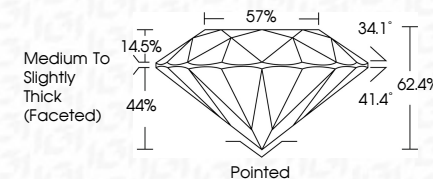
## CLARITY

FL	IF	VVS <sup>1-2</sup>	VS <sup>1-2</sup>	SI <sup>1-2</sup>	I <sup>1-3</sup>
Flawless	Internally Flawless	Very Very Slightly Included	Very Slightly Included	Slightly Included	Included

## LABORATORY GROWN DIAMOND REPORT



October 13, 2025	
IGI Report Number	LG726537991
Description	LABORATORY GROWN DIAMOND
Shape and Cutting Style	ROUND BRILLIANT
Measurements	6.52 - 6.54 X 4.08 MM
<b>GRADING RESULTS</b>	
Carat Weight	1.07 CARAT
Color Grade	D
Clarity Grade	INTERNALLY FLAWLESS
Cut Grade	IDEAL



### ADDITIONAL GRADING INFORMATION

Polish	EXCELLENT
Symmetry	EXCELLENT
Fluorescence	NONE
Inscription(s)	<del>(G)</del> LG726537991
Comments: As Grown - No indication of post-growth treatment.	
This Laboratory Grown Diamond was created by High Pressure High Temperature (HPHT) growth process.	
Type II	



© IGI 2020, International Gemological Institute

FD - 10 20



THIS DOCUMENT WAS PRODUCED WITH THE FOLLOWING SECURITY MEASURES: SPECIAL DOCUMENT PAPER, INK SCREENS, WATERMARK, BACKGROUND DESIGNS, HOLOGRAM AND OTHER SECURITY FEATURES NOT LISTED AND DO EXCEED DOCUMENT SECURITY INDUSTRY GUIDELINES

**www.igi.org**

October 13, 2025  
 IGI Report No LG726537991  
 ROUNDO BRILLIANT

6.52 - 6.64 X .03 MM	Carat Weight	1.07 CARAT
	Color Grade	D
	Clarity Grade	IF
	Cut Grade	IDEAL
	Depth	62.4%
	Table	57%
	Girdle	Medium to Slightly Thick (Faceted)
	Culet	Pointed
	Polish	EXCELLENT
	Symmetry	EXCELLENT
	Fluorescence	NONE
	Report #	6274543203

**Comments:**  
As Grown - No Indication of post-growth treatment.