



ELECTRONIC COPY

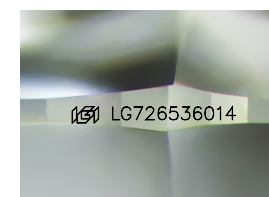
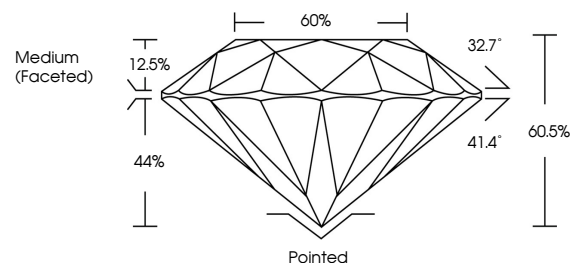
LG726536014 Report verification at igi.org



December 19, 2025 IGI Report Number LG726536014 Description LABORATORY GROWN DIAMOND Shape and Cutting Style ROUND BRILLIANT Measurements 8.01 - 8.04 X 4.85 MM GRADING RESULTS Carat Weight 1.92 CARAT Color Grade E Clarity Grade VS 1 Cut Grade EXCELLENT

December 19, 2025 IGI Report Number LG726536014 Description LABORATORY GROWN DIAMOND Shape and Cutting Style ROUND BRILLIANT Measurements 8.01 - 8.04 X 4.85 MM

PROPORTIONS

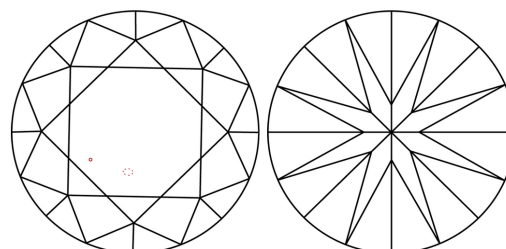


Sample Image Used

GRADING RESULTS

Carat Weight 1.92 CARAT Color Grade E Clarity Grade VS 1 Cut Grade EXCELLENT

CLARITY CHARACTERISTICS



KEY TO SYMBOLS

Red symbols indicate internal characteristics. Green symbols indicate external characteristics.

ADDITIONAL GRADING INFORMATION

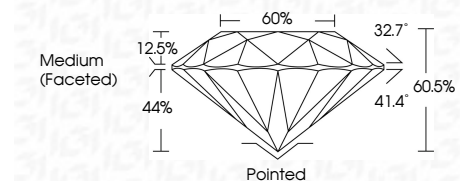
Polish EXCELLENT Symmetry EXCELLENT Fluorescence NONE Inscription(s) IGI LG726536014

COLOR

D E F G H I J Faint Very Light Light

CLARITY

FL IF VS 1-2 VS 2-3 SI 1-2 I 1-3 Flawless Internally Flawless Very Very Slightly Included Very Slightly Included Slightly Included Included



ADDITIONAL GRADING INFORMATION

Polish EXCELLENT Symmetry EXCELLENT Fluorescence NONE Inscription(s) IGI LG726536014 Comments: This Laboratory Grown Diamond was created by Chemical Vapor Deposition (CVD) growth process. Type IIa



December 19, 2025 IGI Report No LG726536014 ROUND BRILLIANT 8.01 - 8.04 X 4.85 MM 1.92 CARAT E VS 1 EXCELLENT 60.5% 60% Medium (Faceted) Pointed EXCELLENT EXCELLENT NONE NONE IGI LG726536014 Comments: This Laboratory Grown Diamond was created by Chemical Vapor Deposition (CVD) growth process. Type IIa