



**ELECTRONIC COPY**

## LABORATORY GROWN DIAMOND REPORT

August 2, 2025	
IGI Report Number	LG726531945
Description	LABORATORY GROWN DIAMOND
Shape and Cutting Style	PRINCESS CUT
Measurements	7.04 X 6.88 X 4.70 MM

## GRADING RESULTS

Carat Weight	2.06 CARATS
Color Grade	D
Clarity Grade	INTERNALLY FLAWLESS

### ADDITIONAL GRADING INFORMATION

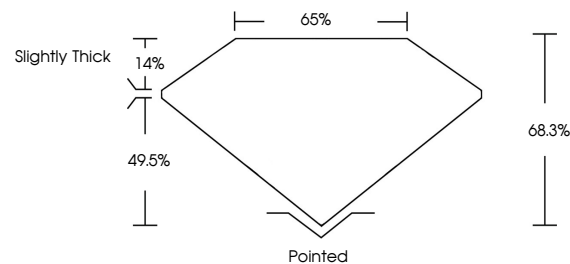
Polish	EXCELLENT
Symmetry	EXCELLENT
Fluorescence	NONE
Inscription(s)	 LG726531945

Comments: As Grown - No indication of post-growth treatment.

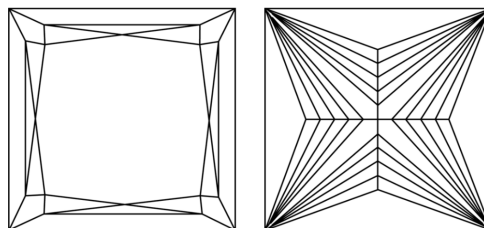
This Laboratory Grown Diamond was created by High Pressure High Temperature (HPHT) growth process.  
Type II

LG726531945  
Report verification at [igi.org](https://igi.org)

## PROPORTIONS

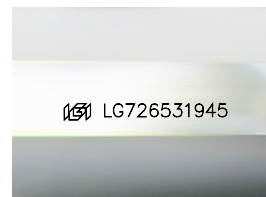


## CLARITY CHARACTERISTICS



## KEY TO SYMBOLS

Red symbols indicate internal characteristics.  
Green symbols indicate external characteristics.



Sample Image Used

**COLOR**

D E F G H I J Faint Very Light Light

## CLARITY

IF	VS <sup>1-2</sup>	VS <sup>1-2</sup>	SI <sup>1-2</sup>	I <sup>1-3</sup>
Internally Flawless	Very Very Slightly Included	Very Slightly Included	Slightly Included	Included

## LABORATORY GROWN DIAMOND REPORT



August 2, 2025	
IGI Report Number	LG726531945
Description	LABORATORY GROWN DIAMOND
Shape and Cutting Style	PRINCESS CUT
Measurements	7.04 X 6.88 X 4.70 MM
GRADING RESULTS	
Carat Weight	2.06 CARATS
Color Grade	D
Clarity Grade	INTERNALLY FLAWLESS

### ADDITIONAL GRADING INFORMATION

Polish	EXCELLENT
Symmetry	EXCELLENT
Fluorescence	NONE
Inscription(s)	<del>165</del> LG726531945
Comments: As Grown - No indication of post-growth treatment.	
This Laboratory Grown Diamond was created by High Pressure High Temperature (HPHT) growth process.	
Type II	



© IGI 2020, International Gemological Institute

FD - 10 20



THIS DOCUMENT WAS PRODUCED WITH THE FOLLOWING SECURITY MEASURES: SPECIAL DOCUMENT PAPER, INK SCREENS, WATERMARK, BACKGROUND DESIGNS, HOLOGRAM AND OTHER SECURITY FEATURES NOT LISTED AND DO EXCEED DOCUMENT SECURITY INDUSTRY GUIDELINES

**www.igi.org**

August 2, 2005	2.06 CARATS
GI Report No. LG72653 1945	D
PHENIX CUT	IF
	68.3%
	65%
	Slightly Thick
	Pointed
	EXCELLENT
	EXCELLENT
	NONE
	(6) LG72653 1945
Carat Weight	
Color Grade	
Clarity Grade	
Depth	
Table	
Girdle	
Culet	
Polish	
Symmetry	
Fluorescence	
Annotations	
Comments:	
	No indication of post-growth
	This Laboratory Grown Diamond was
	created by High Pressure High
	temperature (HPHT) growth process.

**Comments:**  
As Grown - No indication of post-growth treatment.