



**ELECTRONIC COPY**

LG726527185  
Report verification at igi.org



August 4, 2025

IGI Report Number **LG726527185**

Description **LABORATORY GROWN DIAMOND**

Shape and Cutting Style **CUT CORNERED  
RECTANGULAR MODIFIED  
BRILLIANT**

Measurements **14.23 X 9.83 X 6.73 MM**

**GRADING RESULTS**

Carat Weight **8.14 CARATS**

Color Grade **E**

Clarity Grade **VS 2**

August 4, 2025  
IGI Report Number **LG726527185**  
Description **LABORATORY GROWN DIAMOND**  
Shape and Cutting Style **CUT CORNERED RECTANGULAR  
MODIFIED BRILLIANT**  
Measurements **14.23 X 9.83 X 6.73 MM**

**GRADING RESULTS**

Carat Weight **8.14 CARATS**

Color Grade **E**

Clarity Grade **VS 2**

**ADDITIONAL GRADING INFORMATION**

Polish **EXCELLENT**

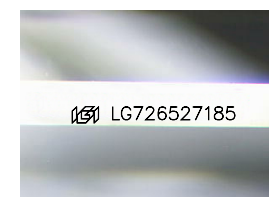
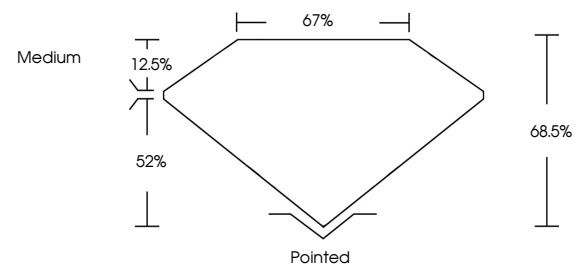
Symmetry **EXCELLENT**

Fluorescence **NONE**

Inscription(s) **IGI LG726527185**

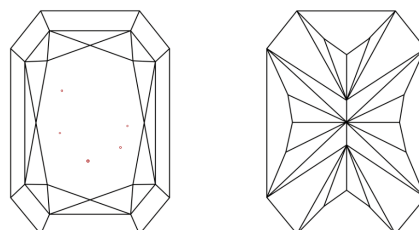
Comments: This Laboratory Grown Diamond was created by Chemical Vapor Deposition (CVD) growth process.  
Type IIa

**PROPORTIONS**



Sample Image Used

**CLARITY CHARACTERISTICS**



**KEY TO SYMBOLS**

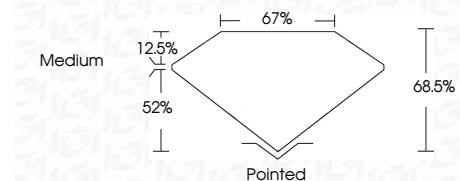
Red symbols indicate internal characteristics.  
Green symbols indicate external characteristics.

**COLOR**

D E F G H I J Faint Very Light Light

**CLARITY**

IF	VS <sup>1-2</sup>	VS <sup>1-2</sup>	SI <sup>1-2</sup>	I <sup>1-3</sup>
Internally Flawless	Very Very Slightly Included	Very Slightly Included	Slightly Included	Included



**ADDITIONAL GRADING INFORMATION**

Polish **EXCELLENT**

Symmetry **EXCELLENT**

Fluorescence **NONE**

Inscription(s) **IGI LG726527185**

Comments: This Laboratory Grown Diamond was created by Chemical Vapor Deposition (CVD) growth process.  
Type IIa



**IGI**



August 4, 2025  
IGI Report No **LG726527185**  
**CUT CORNERED RECT. MODIFIED BRILLIANT**  
**14.23 X 9.83 X 6.73 MM**  
Carat Weight **8.14 CARATS**  
Color Grade **E**  
Clarity Grade **VS 2**  
Depth **68.5%**  
Table **67%**  
Girdle **Medium**  
Culet **Pointed**  
Polish **EXCELLENT**  
Symmetry **EXCELLENT**  
Fluorescence **NONE**  
Inscription(s) **IGI LG726527185**  
Comments: This Laboratory Grown Diamond was created by Chemical Vapor Deposition (CVD) growth process.  
Type IIa