



ELECTRONIC COPY

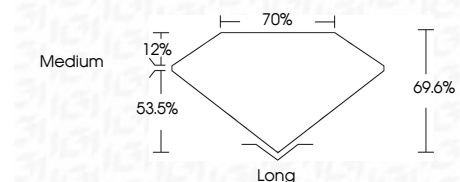
LG726521993
Report verification at igi.org



August 2, 2025
IGI Report Number **LG726521993**
Description **LABORATORY GROWN DIAMOND**

Shape and Cutting Style **BAGUETTE**
Measurements **8.72 X 4.05 X 2.82 MM**

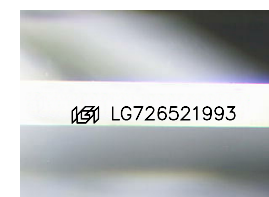
GRADING RESULTS
Carat Weight **1.05 CARAT**
Color Grade **F**
Clarity Grade **VVS 1**



ADDITIONAL GRADING INFORMATION
Polish **EXCELLENT**
Symmetry **EXCELLENT**
Fluorescence **NONE**
Inscription(s) **(IGI) LG726521993**
Comments: This Laboratory Grown Diamond was created by Chemical Vapor Deposition (CVD) growth process. Type IIa

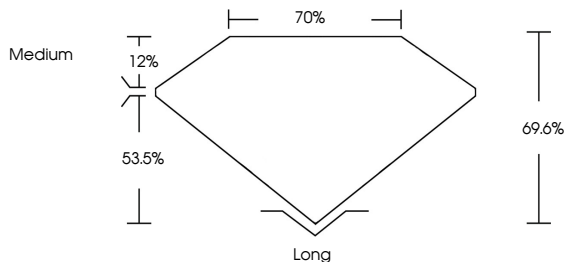


August 2, 2025
IGI Report No LG726521993
BAGUETTE
1.05 CARAT
F
8.72 X 4.05 X 2.82 MM
Carat Weight
Color Grade
Clarity Grade
Depth
Table
Girdle
Medium
Long
EXCELLENT
EXCELLENT
NONE
Inscription(s)
(IGI) LG726521993
Comments: This Laboratory Grown Diamond was created by Chemical Vapor Deposition (CVD) growth process. Type IIa

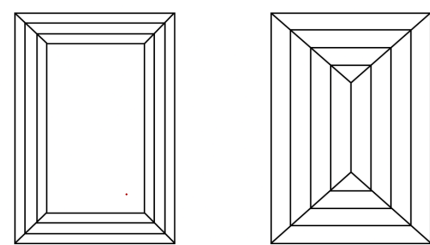


Sample Image Used

PROPORTIONS



CLARITY CHARACTERISTICS



KEY TO SYMBOLS
Red symbols indicate internal characteristics.
Green symbols indicate external characteristics.

COLOR

D	E	F	G	H	I	J	Faint	Very Light	Light
---	---	---	---	---	---	---	-------	------------	-------

CLARITY

IF	VS ¹⁻²	VS ¹⁻²	SI ¹⁻²	I ¹⁻³
Internally Flawless	Very Very Slightly Included	Very Slightly Included	Slightly Included	Included

