



**INTERNATIONAL  
GEMOLOGICAL  
INSTITUTE**

**ELECTRONIC COPY**

**LABORATORY GROWN DIAMOND REPORT**

August 11, 2025  
IGI Report Number **LG726520739**  
Description **LABORATORY GROWN DIAMOND**  
Shape and Cutting Style **ROUND BRILLIANT**  
Measurements **4.55 - 4.58 X 2.83 MM**

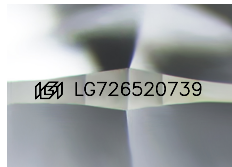
**GRADING RESULTS**

Carat Weight **0.36 CARAT**  
Color Grade **FANCY VIVID PINK**  
Clarity Grade **VVS 1**  
Cut Grade **IDEAL**

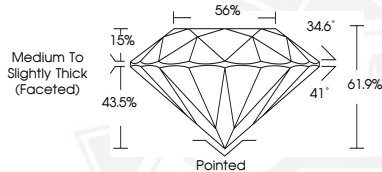
**ADDITIONAL GRADING INFORMATION**

Polish **EXCELLENT**  
Symmetry **EXCELLENT**  
Fluorescence **SLIGHT**  
Inscription(s) **IGI LG726520739**

Comments: This Laboratory Grown Diamond was created by Chemical Vapor Deposition (CVD) growth process. Indications of post-growth treatment.



Sample Image Used



August 11, 2025  
IGI Report Number **LG726520739**  
ROUND BRILLIANT  
LABORATORY GROWN DIAMOND  
4.55 - 4.58 X 2.83 MM  
Carat Weight **0.36 CARAT**  
Color Grade **FANCY VIVID PINK**  
Clarity Grade **VVS 1**  
Cut Grade **IDEAL**  
Polish **EXCELLENT**  
Symmetry **EXCELLENT**  
Fluorescence **SLIGHT**  
Inscription(s) **IGI LG726520739**

Comments: This Laboratory Grown Diamond was created by Chemical Vapor Deposition (CVD) growth process. Indications of post-growth treatment.



August 11, 2025  
IGI Report Number **LG726520739**  
ROUND BRILLIANT  
LABORATORY GROWN DIAMOND  
4.55 - 4.58 X 2.83 MM  
Carat Weight **0.36 CARAT**  
Color Grade **FANCY VIVID PINK**  
Clarity Grade **VVS 1**  
Cut Grade **IDEAL**  
Polish **EXCELLENT**  
Symmetry **EXCELLENT**  
Fluorescence **SLIGHT**  
Inscription(s) **IGI LG726520739**

Comments: This Laboratory Grown Diamond was created by Chemical Vapor Deposition (CVD) growth process. Indications of post-growth treatment.

THIS DOCUMENT WAS PRODUCED WITH THE FOLLOWING SECURITY MEASURES: SPECIAL DOCUMENT PAPER, INK SCREENS, WATERMARK, BACKGROUND DESIGNS, HOLOGRAM AND OTHER SECURITY FEATURES NOT LISTED AND DO EXCEED DOCUMENT SECURITY INDUSTRY GUIDELINES.

For terms & conditions and to verify this report, please visit [www.igi.org](http://www.igi.org)