



**INTERNATIONAL
GEMOLOGICAL
INSTITUTE**

ELECTRONIC COPY



August 10, 2025

IGI Report Number **LG726520735**

ROUND BRILLIANT

LABORATORY GROWN DIAMOND

4.83 - 4.88 X 2.95 MM

Carat Weight **0.42 CARAT**

Color Grade **FANCY VIVID PINK**

Clarity Grade **VVS 2**

Cut Grade **IDEAL**

Polish **EXCELLENT**

Symmetry **EXCELLENT**

Fluorescence **SLIGHT**

Inscription(s) **IGI LG726520735**

Comments: This Laboratory Grown Diamond was created by Chemical Vapor Deposition (CVD) growth process. Indications of post-growth treatment.

LABORATORY GROWN DIAMOND REPORT

August 10, 2025

IGI Report Number

LG726520735

Description

LABORATORY GROWN DIAMOND

Shape and Cutting Style

ROUND BRILLIANT

Measurements

4.83 - 4.88 X 2.95 MM

GRADING RESULTS

Carat Weight

0.42 CARAT

Color Grade

FANCY VIVID PINK

Clarity Grade

VVS 2

Cut Grade

IDEAL

ADDITIONAL GRADING INFORMATION

Polish

EXCELLENT

Symmetry

EXCELLENT

Fluorescence

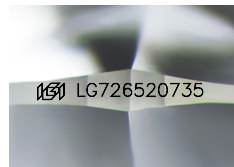
SLIGHT

Inscription(s)

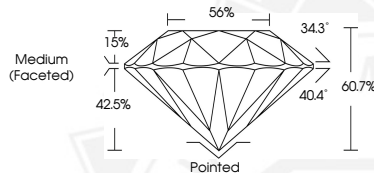
IGI LG726520735

Comments: This Laboratory Grown Diamond was created by Chemical Vapor Deposition (CVD) growth process.

Indications of post-growth treatment.



Sample Image Used



August 10, 2025

IGI Report Number **LG726520735**

ROUND BRILLIANT

LABORATORY GROWN DIAMOND

4.83 - 4.88 X 2.95 MM

Carat Weight **0.42 CARAT**

Color Grade **FANCY VIVID PINK**

Clarity Grade **VVS 2**

Cut Grade **IDEAL**

Polish **EXCELLENT**

Symmetry **EXCELLENT**

Fluorescence **SLIGHT**

Inscription(s) **IGI LG726520735**

Comments: This Laboratory Grown Diamond was created by Chemical Vapor Deposition (CVD) growth process. Indications of post-growth treatment.



THIS DOCUMENT WAS PRODUCED WITH THE FOLLOWING SECURITY MEASURES: SPECIAL DOCUMENT PAPER, INK SCREENS, WATERMARK, BACKGROUND DESIGNS, HOLOGRAM AND OTHER SECURITY FEATURES NOT LISTED AND DO EXCEED DOCUMENT SECURITY INDUSTRY GUIDELINES.

For terms & conditions and to verify this report, please visit www.igi.org