

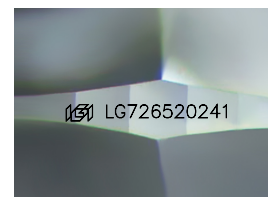
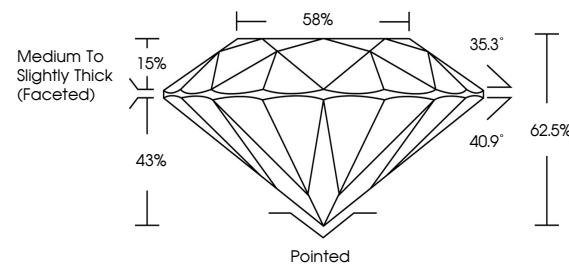


ELECTRONIC COPY

LABORATORY GROWN DIAMOND REPORT

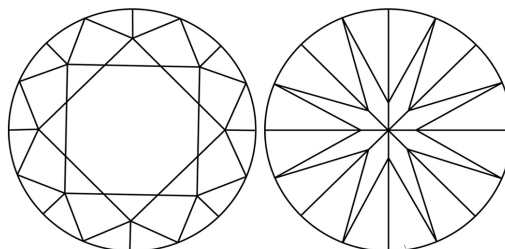
LG726520241
Report verification at igi.org

PROPORTIONS



Sample Image Used

CLARITY CHARACTERISTICS



KEY TO SYMBOLS

Red symbols indicate internal characteristics.
Green symbols indicate external characteristics.

COLOR

D E F G H I J Faint Very Light Light

CLARITY

IF WS¹⁻² VS¹⁻² SI¹⁻² I¹⁻³

Internally Flawless	Very Very Slightly Included	Very Slightly Included	Slightly Included	Included
------------------------	--------------------------------	---------------------------	----------------------	----------



© IGI 2020, International Gemological Institute

FD - 10 20

www.igi.org

LABORATORY GROWN DIAMOND REPORT



July 31, 2025

IGI Report Number **LG726520241**Description **LABORATORY GROWN DIAMOND**Shape and Cutting Style **ROUND BRILLIANT**

Measurements 6.40 - 6.42 X 4.00 MM

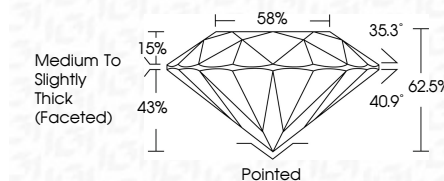
GRADING RESULTS

Carat Weight 1.02 CARAT

Color Grade D

Clarity Grade **VS 1**

Cut Grade **IDEAL**



ADDITIONAL GRADING INFORMATION

Polish **EXCELLENT**Symmetry **EXCELLENT**Fluorescence **NONE**Inscription(s) LG726520241

Comments: As Grown - No indication of post-growth treatment.

This Laboratory Grown Diamond was created by High Pressure High Temperature (HPHT) growth process.

Type II



July 31, 2026	1.02 CARAT	D	VVS 1	Excellent	Painted	(69) LG759202041 NONE (69) LG759202041
Report No. LG759202041			IDEAL	62.5%	EXCELLENT	
ROUND BRILLIANT				88%	EXCELLENT	
				Medium to Slightly Thick (Faceted)		
	1.02 MM					
	Color Grade					
	Clarity Grade					
	Cut Grade					
	Depth					
	Table					
	Girdle					
	Culet					
	Polish					
	Symmetry					
	Fluorescence					
	Inscriptions					
	Comments:					
	As Grown - No Indication of post-growth treatment.					
	This Laboratory Growth Diamond was created by High Pressure High Temperature (HPHT) growth process.					
	Type II					