



INTERNATIONAL GEMOLOGICAL INSTITUTE

ELECTRONIC COPY

LABORATORY GROWN DIAMOND REPORT

July 30, 2025
IGI Report Number **LG726519336**
Description **LABORATORY GROWN DIAMOND**
Shape and Cutting Style **PRINCESS CUT**
Measurements **5.45 X 5.38 X 3.92 MM**

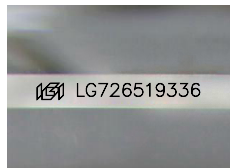
GRADING RESULTS

Carat Weight **0.96 CARAT**
Color Grade **F**
Clarity Grade **VS 2**

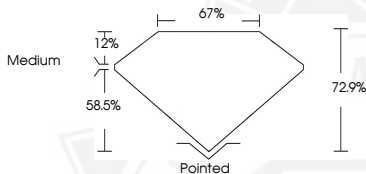
ADDITIONAL GRADING INFORMATION

Polish **EXCELLENT**
Symmetry **EXCELLENT**
Fluorescence **NONE**
Inscription(s) **IGI LG726519336**

Comments: This Laboratory Grown Diamond was created by Chemical Vapor Deposition (CVD) growth process.
Type IIa



Sample Image Used



July 30, 2025
IGI Report Number **LG726519336**
PRINCESS CUT
LABORATORY GROWN DIAMOND
5.45 X 5.38 X 3.92 MM
Carat Weight **0.96 CARAT**
Color Grade **F**
Clarity Grade **VS 2**
Polish **EXCELLENT**
Symmetry **EXCELLENT**
Fluorescence **NONE**
Inscription(s) **IGI LG726519336**
Comments: This Laboratory Grown Diamond was created by Chemical Vapor Deposition (CVD) growth process. Type IIa



July 30, 2025
IGI Report Number **LG726519336**
PRINCESS CUT
LABORATORY GROWN DIAMOND
5.45 X 5.38 X 3.92 MM
Carat Weight **0.96 CARAT**
Color Grade **F**
Clarity Grade **VS 2**
Polish **EXCELLENT**
Symmetry **EXCELLENT**
Fluorescence **NONE**
Inscription(s) **IGI LG726519336**
Comments: This Laboratory Grown Diamond was created by Chemical Vapor Deposition (CVD) growth process. Type IIa



THIS DOCUMENT WAS PRODUCED WITH THE FOLLOWING SECURITY MEASURES: SPECIAL DOCUMENT PAPER, INK SCREENS, WATERMARK, BACKGROUND DESIGNS, HOLOGRAM AND OTHER SECURITY FEATURES NOT LISTED AND DO EXCEED DOCUMENT SECURITY INDUSTRY GUIDELINES.

For terms & conditions and to verify this report, please visit www.igi.org