



**ELECTRONIC COPY**

LG726517441  
Report verification at igi.org



August 2, 2025  
IGI Report Number **LG726517441**  
Description **LABORATORY GROWN DIAMOND**  
Shape and Cutting Style **SQUARE CUSHION MODIFIED  
BRILLIANT**

Measurements **11.33 X 10.77 X 7.15 MM**

**GRADING RESULTS**

Carat Weight **8.05 CARATS**  
Color Grade **F**  
Clarity Grade **VS 1**

August 2, 2025  
IGI Report Number **LG726517441**  
Description **LABORATORY GROWN DIAMOND**  
Shape and Cutting Style **SQUARE CUSHION MODIFIED  
BRILLIANT**  
Measurements **11.33 X 10.77 X 7.15 MM**

**GRADING RESULTS**

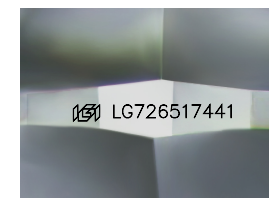
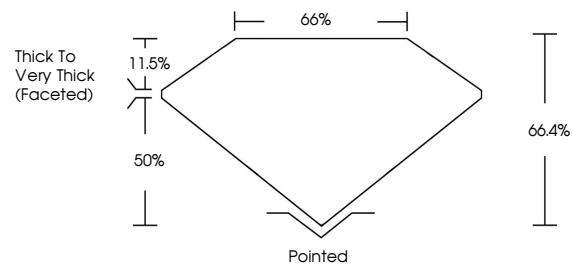
Carat Weight **8.05 CARATS**  
Color Grade **F**  
Clarity Grade **VS 1**

**ADDITIONAL GRADING INFORMATION**

Polish **EXCELLENT**  
Symmetry **EXCELLENT**  
Fluorescence **NONE**  
Inscription(s) **IGI LG726517441**

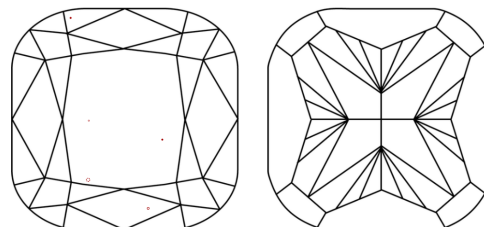
Comments: This Laboratory Grown Diamond was created by Chemical Vapor Deposition (CVD) growth process. Type IIa

**PROPORTIONS**



Sample Image Used

**CLARITY CHARACTERISTICS**



**KEY TO SYMBOLS**

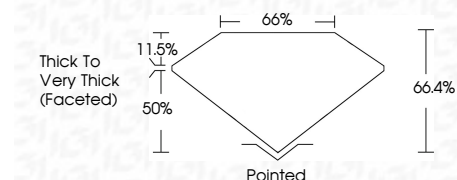
Red symbols indicate internal characteristics.  
Green symbols indicate external characteristics.

**COLOR**

D E F G H I J Faint Very Light Light

**CLARITY**

IF	WS <sup>1-2</sup>	VS <sup>1-2</sup>	SI <sup>1-2</sup>	I <sup>1-3</sup>
Internally Flawless	Very Very Slightly Included	Very Slightly Included	Slightly Included	Included



**ADDITIONAL GRADING INFORMATION**

Polish **EXCELLENT**  
Symmetry **EXCELLENT**  
Fluorescence **NONE**  
Inscription(s) **IGI LG726517441**  
Comments: This Laboratory Grown Diamond was created by Chemical Vapor Deposition (CVD) growth process. Type IIa



**IGI**



August 2, 2025  
IGI Report No **LG726517441**  
**SQUARE CUSHION MODIFIED BRILLIANT**  
11.33 X 10.77 X 7.15 MM  
8.05 CARATS  
Color Grade **F**  
Clarity Grade **VS 1**  
Table **66.4%**  
Depth **50%**  
Thickness **11.5%**  
Pointed  
Culet **None**  
Polish **EXCELLENT**  
Symmetry **EXCELLENT**  
Fluorescence **NONE**  
Inscription(s) **IGI LG726517441**

Comments: This Laboratory Grown Diamond was created by Chemical Vapor Deposition (CVD) growth process. Type IIa