



INTERNATIONAL GEMOLOGICAL INSTITUTE

ELECTRONIC COPY



July 31, 2025

IGI Report Number LG726515645

ROUND BRILLIANT

LABORATORY GROWN DIAMOND

5.67 - 5.71 X 3.58 MM

Carat Weight 0.72 CARAT

Color Grade D

Clarity Grade VVS 2

Cut Grade VERY GOOD

Polish VERY GOOD

Symmetry GOOD

Fluorescence NONE

Inscription(s) IGI LG726515645

Comments: As Grown - No indication of post-growth treatment. This Laboratory Grown Diamond was created by High Pressure High Temperature (HPHT) growth process. Type II

LABORATORY GROWN DIAMOND REPORT

July 31, 2025

IGI Report Number

LG726515645

Description

LABORATORY GROWN DIAMOND

Shape and Cutting Style

ROUND BRILLIANT

Measurements

5.67 - 5.71 X 3.58 MM

GRADING RESULTS

Carat Weight

0.72 CARAT

Color Grade

D

Clarity Grade

VVS 2

Cut Grade

VERY GOOD

ADDITIONAL GRADING INFORMATION

Polish

VERY GOOD

Symmetry

GOOD

Fluorescence

NONE

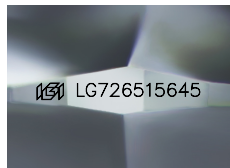
Inscription(s)

IGI LG726515645

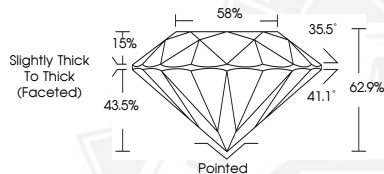
Comments: As Grown - No indication of post-growth treatment.

This Laboratory Grown Diamond was created by High Pressure High Temperature (HPHT) growth process.

Type II



Sample Image Used



July 31, 2025

IGI Report Number LG726515645

ROUND BRILLIANT

LABORATORY GROWN DIAMOND

5.67 - 5.71 X 3.58 MM

Carat Weight 0.72 CARAT

Color Grade D

Clarity Grade VVS 2

Cut Grade VERY GOOD

Polish VERY GOOD

Symmetry GOOD

Fluorescence NONE

Inscription(s) IGI LG726515645

Comments: As Grown - No indication of post-growth treatment. This Laboratory Grown Diamond was created by High Pressure High Temperature (HPHT) growth process. Type II



THIS DOCUMENT WAS PRODUCED WITH THE FOLLOWING SECURITY MEASURES: SPECIAL DOCUMENT PAPER, INK SCREENS, WATERMARK, BACKGROUND DESIGNS, HOLOGRAM AND OTHER SECURITY FEATURES NOT LISTED AND DO EXCEED DOCUMENT SECURITY INDUSTRY GUIDELINES.

For terms & conditions and to verify this report, please visit www.igi.org