



ELECTRONIC COPY

LG726515394
Report verification at igi.org



August 11, 2025

IGI Report Number **LG726515394**

Description **LABORATORY GROWN DIAMOND**

Shape and Cutting Style **CUT CORNERED
RECTANGULAR MODIFIED
BRILLIANT**

Measurements **11.75 X 7.36 X 5.01 MM**

GRADING RESULTS

Carat Weight **4.05 CARATS**

Color Grade **FANCY VIVID YELLOW**

Clarity Grade **VVS 2**

LABORATORY GROWN DIAMOND REPORT

August 11, 2025

IGI Report Number **LG726515394**

Description **LABORATORY GROWN DIAMOND**

Shape and Cutting Style **CUT CORNERED RECTANGULAR
MODIFIED BRILLIANT**

Measurements **11.75 X 7.36 X 5.01 MM**

GRADING RESULTS

Carat Weight **4.05 CARATS**

Color Grade **FANCY VIVID YELLOW**

Clarity Grade **VVS 2**

ADDITIONAL GRADING INFORMATION

Polish **EXCELLENT**

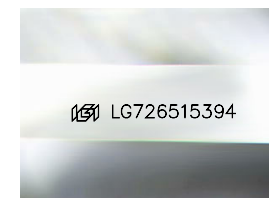
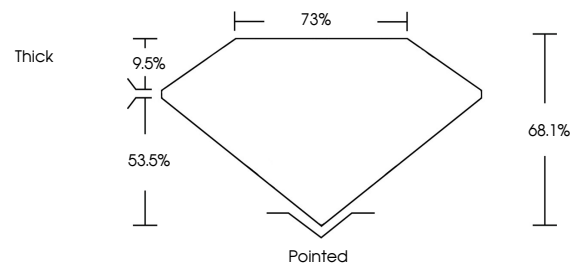
Symmetry **EXCELLENT**

Fluorescence **NONE**

Inscription(s) **IGI LG726515394**

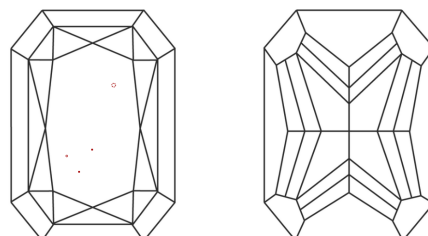
Comments: This Laboratory Grown Diamond was created by Chemical Vapor Deposition (CVD) growth process.

PROPORTIONS



Sample Image Used

CLARITY CHARACTERISTICS



KEY TO SYMBOLS

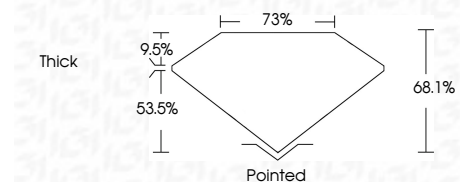
Red symbols indicate internal characteristics.
Green symbols indicate external characteristics.

COLOR

D E F G H I J Faint Very Light Light

CLARITY

IF	VS ¹⁻²	VS ¹⁻²	SI ¹⁻²	I ¹⁻³
Internally Flawless	Very Very Slightly Included	Very Slightly Included	Slightly Included	Included



ADDITIONAL GRADING INFORMATION

Polish **EXCELLENT**

Symmetry **EXCELLENT**

Fluorescence **NONE**

Inscription(s) **IGI LG726515394**

Comments: This Laboratory Grown Diamond was created by Chemical Vapor Deposition (CVD) growth process.



IGI



August 11, 2025
IGI Report No LG726515394
CUT CORNERED RECT. MODIFIED BRILLIANT

4.05 CARATS
Carat Weight
FANCY VIVID YELLOW
Color Grade

VVS 2
Clarity Grade

68.1%
Depth

73%
Table

Thick
Girdle

Pointed
Culet

EXCELLENT
Polish

EXCELLENT
Symmetry

NONE
Fluorescence

IGI LG726515394
Inscription(s)

Comments: This Laboratory Grown Diamond was created by Chemical Vapor Deposition (CVD) growth process.