



ELECTRONIC COPY

LABORATORY GROWN DIAMOND REPORT

August 2, 2025	
IGI Report Number	LG726513488
Description	LABORATORY GROWN DIAMOND
Shape and Cutting Style	CUT CORNERED RECTANGULAR MODIFIED BRILLIANT
Measurements	10.97 X 7.25 X 4.85 MM

GRADING RESULTS

Carat Weight	3.51 CARATS
Color Grade	F
Clarity Grade	VVS 2
Cut Grade	EXCELLENT

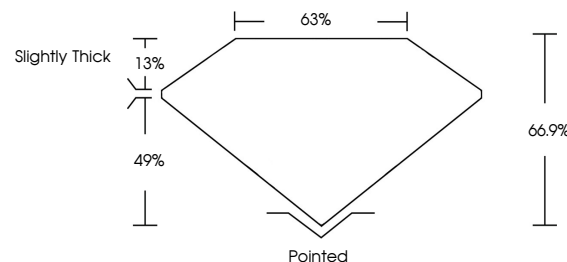
ADDITIONAL GRADING INFORMATION

Polish	EXCELLENT
Symmetry	EXCELLENT
Fluorescence	NONE
Inscription(s)	15 LG726513488

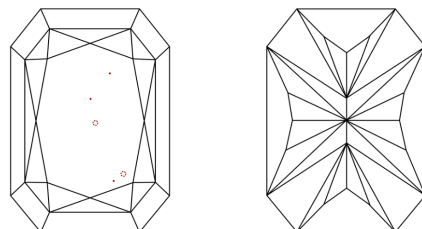
Comments: This Laboratory Grown Diamond was created by Chemical Vapor Deposition (CVD) growth process.
Type IIa

LG726513488
Report verification at lgi.org

PROPORTIONS

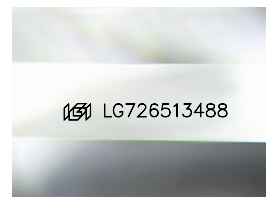


CLARITY CHARACTERISTICS



KEY TO SYMBOLS

Red symbols indicate internal characteristics.
Green symbols indicate external characteristics.



Sample Image Used

COLOR

D E F G H I J Faint Very Light Light

CLARITY

IF VWS¹⁻² VS¹⁻² SI¹⁻² I¹⁻³

Internally Flawless	Very Very Slightly Included	Very Slightly Included	Slightly Included	Included
------------------------	--------------------------------	---------------------------	----------------------	----------



© IGI 2020, International Gemological Institute

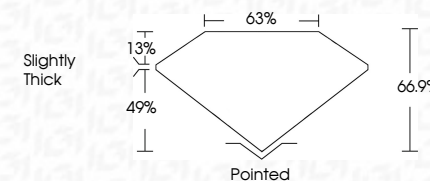
FD - 10 20

www.igi.org

LABORATORY GROWN DIAMOND REPORT



August 2, 2025	
IGI Report Number	LG726513488
Description	LABORATORY GROWN DIAMOND
Shape and Cutting Style	CUT CORNERED RECTANGULAR MODIFIED BRILLIANT
Measurements	10.97 X 7.25 X 4.85 MM
GRADING RESULTS	
Carat Weight	3.51 CARATS
Color Grade	F
Clarity Grade	VVS 2
Cut Grade	EXCELLENT



ADDITIONAL GRADING INFORMATION

Polish	EXCELLENT
Symmetry	EXCELLENT
Fluorescence	NONE
Inscription(s)	 LG726513488
<p>Comments: This Laboratory Grown Diamond was created by Chemical Vapor Deposition (CVD) growth process.</p> <p>Type IIa</p>	



August 2, 2026	GI Report No LG726513468
CUT CORNERED RECT. MODIFIED BRILLIANT	
10.07 X 7.26 X 4.85 MM	3.51 CARATS
Color Grade	W6 F
Clarity Grade	EXCELLENT
Cut Grade	66.5%
Depth	65%
Girdle	Slightly Thick
Culet	Pointed
Pavil	EXCELLENT
Fluorescence	EXCELLENT
Inscriptions(s)	NONE
	681 LG726513468
Comments: This Laboratory Grown Diamond was created by Chemical Vapor Deposition (CVD) growth process. type IIa	