



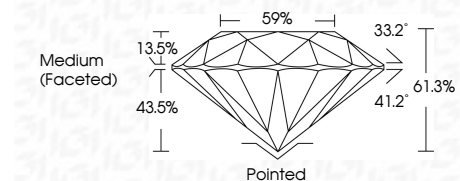
ELECTRONIC COPY

LG726513051 Report verification at igi.org



July 30, 2025 IGI Report Number LG726513051 Description LABORATORY GROWN DIAMOND Shape and Cutting Style ROUND BRILLIANT Measurements 11.31 - 11.37 X 6.94 MM

GRADING RESULTS Carat Weight 5.52 CARATS Color Grade E Clarity Grade VVS 2 Cut Grade IDEAL



ADDITIONAL GRADING INFORMATION Polish EXCELLENT Symmetry EXCELLENT Fluorescence NONE Inscription(s) LG726513051 Comments: This Laboratory Grown Diamond was created by Chemical Vapor Deposition (CVD) growth process. Type IIa



July 30, 2025 IGI Report No LG726513051 ROUND BRILLIANT 11.31 - 11.37 X 6.94 MM 5.52 CARATS E VVS 2 IDEAL 61.3% 59% Medium (Faceted) Pointed EXCELLENT EXCELLENT NONE NONE LG726513051 Comments: This Laboratory Grown Diamond was created by Chemical Vapor Deposition (CVD) growth process. Type IIa

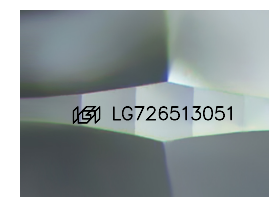
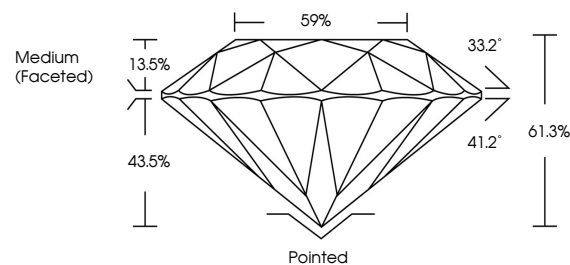
July 30, 2025 IGI Report Number LG726513051 Description LABORATORY GROWN DIAMOND Shape and Cutting Style ROUND BRILLIANT Measurements 11.31 - 11.37 X 6.94 MM

GRADING RESULTS Carat Weight 5.52 CARATS Color Grade E Clarity Grade VVS 2 Cut Grade IDEAL

ADDITIONAL GRADING INFORMATION Polish EXCELLENT Symmetry EXCELLENT Fluorescence NONE Inscription(s) LG726513051

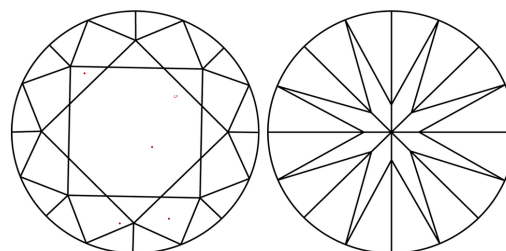
Comments: This Laboratory Grown Diamond was created by Chemical Vapor Deposition (CVD) growth process. Type IIa

PROPORTIONS



Sample Image Used

CLARITY CHARACTERISTICS



KEY TO SYMBOLS

Red symbols indicate internal characteristics. Green symbols indicate external characteristics.

COLOR

D E F G H I J Faint Very Light Light

CLARITY

IF WS 1-2 VS 1-2 SI 1-2 I 1-3 Internally Flawless Very Very Slightly Included Very Slightly Included Slightly Included Included

