



ELECTRONIC COPY

LG726511663
Report verification at igi.org



July 31, 2025
IGI Report Number **LG726511663**
Description **LABORATORY GROWN DIAMOND**
Shape and Cutting Style **ROUND BRILLIANT**
Measurements **9.92 - 9.96 X 6.12 MM**
GRADING RESULTS
Carat Weight **3.72 CARATS**
Color Grade **E**
Clarity Grade **VVS 2**
Cut Grade **IDEAL**

LABORATORY GROWN DIAMOND REPORT

July 31, 2025
IGI Report Number **LG726511663**
Description **LABORATORY GROWN DIAMOND**
Shape and Cutting Style **ROUND BRILLIANT**
Measurements **9.92 - 9.96 X 6.12 MM**

GRADING RESULTS

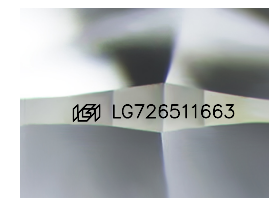
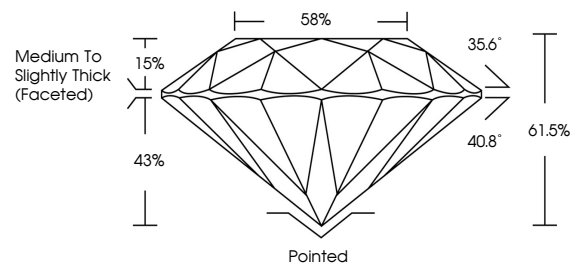
Carat Weight **3.72 CARATS**
Color Grade **E**
Clarity Grade **VVS 2**
Cut Grade **IDEAL**

ADDITIONAL GRADING INFORMATION

Polish **EXCELLENT**
Symmetry **EXCELLENT**
Fluorescence **NONE**
Inscription(s) **IGI LG726511663**

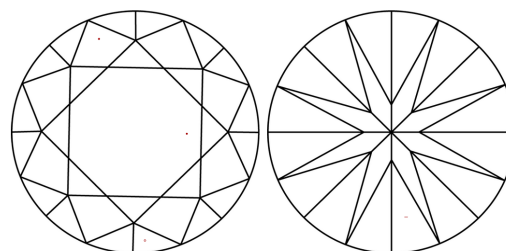
Comments: This Laboratory Grown Diamond was created by Chemical Vapor Deposition (CVD) growth process.
Type IIa

PROPORTIONS



Sample Image Used

CLARITY CHARACTERISTICS



KEY TO SYMBOLS

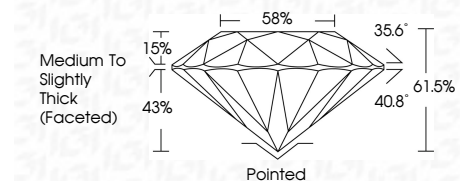
Red symbols indicate internal characteristics.
Green symbols indicate external characteristics.

COLOR

D E F G H I J Faint Very Light Light

CLARITY

IF	VS ¹⁻²	VS ¹⁻²	SI ¹⁻²	I ¹⁻³
Internally Flawless	Very Very Slightly Included	Very Slightly Included	Slightly Included	Included



ADDITIONAL GRADING INFORMATION

Polish **EXCELLENT**
Symmetry **EXCELLENT**
Fluorescence **NONE**
Inscription(s) **IGI LG726511663**
Comments: This Laboratory Grown Diamond was created by Chemical Vapor Deposition (CVD) growth process.
Type IIa



July 31, 2025	IGI Report No LG726511663	3.72 CARATS	E	Pointed	EXCELLENT	EXCELLENT	NONE	IGI LG726511663
ROUND BRILLIANT	9.92 - 9.96 X 6.12 MM	Color Grade	VVS 2	Depth	IDEAL	61.5%	Medium To Slightly Thick (Faceted)	Polish
		Clarity Grade	IDEAL	Table	58%			Symmetry
		Cut Grade	EXCELLENT	Grade				Fluorescence
			NONE					Inscription(s)

Comments: This Laboratory Grown Diamond was created by Chemical Vapor Deposition (CVD) growth process.
Type IIa