



**INTERNATIONAL  
GEMOLOGICAL  
INSTITUTE**

**ELECTRONIC COPY**



July 29, 2025

**IGI Report Number LG726510056**  
**TRIANGULAR BRILLIANT**  
**LABORATORY GROWN DIAMOND**  
**5.56 X 5.82 X 3.32 MM**

Carat Weight **0.60 CARAT**  
Color Grade **D**  
Clarity Grade **VS 1**  
Polish **EXCELLENT**  
Symmetry **EXCELLENT**  
Fluorescence **NONE**  
Inscription(s) **IGI LG726510056**

Comments: This Laboratory Grown Diamond was created by Chemical Vapor Deposition (CVD) growth process. Type IIa

**LABORATORY GROWN DIAMOND REPORT**

July 29, 2025  
IGI Report Number **LG726510056**  
Description **LABORATORY GROWN DIAMOND**  
Shape and Cutting Style **TRIANGULAR BRILLIANT**  
Measurements **5.56 X 5.82 X 3.32 MM**

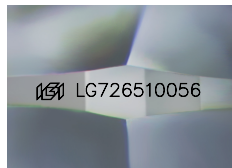
**GRADING RESULTS**

Carat Weight **0.60 CARAT**  
Color Grade **D**  
Clarity Grade **VS 1**

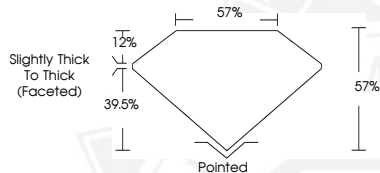
**ADDITIONAL GRADING INFORMATION**

Polish **EXCELLENT**  
Symmetry **EXCELLENT**  
Fluorescence **NONE**  
Inscription(s) **IGI LG726510056**

Comments: This Laboratory Grown Diamond was created by Chemical Vapor Deposition (CVD) growth process. Type IIa



Sample Image Used



July 29, 2025

**IGI Report Number LG726510056**  
**TRIANGULAR BRILLIANT**  
**LABORATORY GROWN DIAMOND**  
**5.56 X 5.82 X 3.32 MM**

Carat Weight **0.60 CARAT**  
Color Grade **D**  
Clarity Grade **VS 1**  
Polish **EXCELLENT**  
Symmetry **EXCELLENT**  
Fluorescence **NONE**  
Inscription(s) **IGI LG726510056**

Comments: This Laboratory Grown Diamond was created by Chemical Vapor Deposition (CVD) growth process. Type IIa



THIS DOCUMENT WAS PRODUCED WITH THE FOLLOWING SECURITY MEASURES: SPECIAL DOCUMENT PAPER, INK SCREENS, WATERMARK, BACKGROUND DESIGNS, HOLOGRAM AND OTHER SECURITY FEATURES NOT LISTED AND DO EXCEED DOCUMENT SECURITY INDUSTRY GUIDELINES.

For terms & conditions and to verify this report, please visit [www.igi.org](http://www.igi.org)