



ELECTRONIC COPY

LG726503095
Report verification at igi.org

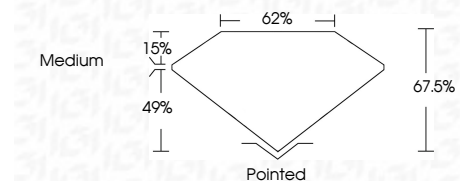


July 31, 2025
IGI Report Number LG726503095
Description LABORATORY GROWN DIAMOND
Shape and Cutting Style CUT CORNERED RECTANGULAR MODIFIED BRILLIANT

Measurements 10.24 X 7.18 X 4.85 MM

GRADING RESULTS

Carat Weight 3.10 CARATS
Color Grade F
Clarity Grade VS 2



ADDITIONAL GRADING INFORMATION

Polish EXCELLENT
Symmetry EXCELLENT
Fluorescence NONE
Inscription(s) IGI LG726503095
Comments: This Laboratory Grown Diamond was created by Chemical Vapor Deposition (CVD) growth process. Type IIa



July 31, 2025
IGI Report No LG726503095
CUT CORNERED RECT. MODIFIED BRILLIANT
10.24 X 7.18 X 4.85 MM
3.10 CARATS
F
VS 2
67.5%
62%
Medium
Pointed
EXCELLENT
EXCELLENT
NONE
IGI LG726503095
Comments: This Laboratory Grown Diamond was created by Chemical Vapor Deposition (CVD) growth process. Type IIa

LABORATORY GROWN DIAMOND REPORT

July 31, 2025
IGI Report Number LG726503095
Description LABORATORY GROWN DIAMOND
Shape and Cutting Style CUT CORNERED RECTANGULAR MODIFIED BRILLIANT
Measurements 10.24 X 7.18 X 4.85 MM

GRADING RESULTS

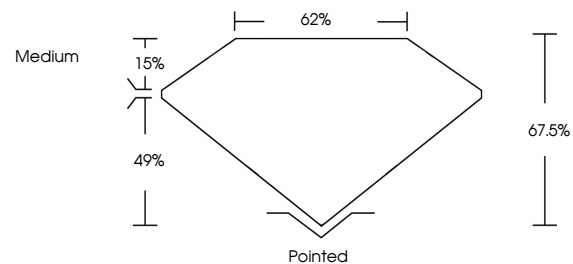
Carat Weight 3.10 CARATS
Color Grade F
Clarity Grade VS 2

ADDITIONAL GRADING INFORMATION

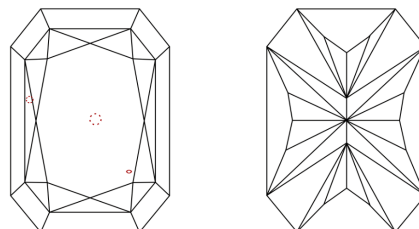
Polish EXCELLENT
Symmetry EXCELLENT
Fluorescence NONE
Inscription(s) IGI LG726503095

Comments: This Laboratory Grown Diamond was created by Chemical Vapor Deposition (CVD) growth process. Type IIa

PROPORTIONS

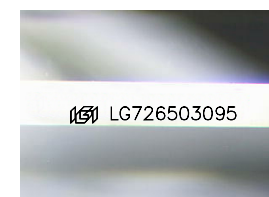


CLARITY CHARACTERISTICS



KEY TO SYMBOLS

Red symbols indicate internal characteristics.
Green symbols indicate external characteristics.



Sample Image Used

COLOR

D E F G H I J Faint Very Light Light

CLARITY

IF WS 1-2 VS 1-2 SI 1-2 I 1-3
Internally Flawless Very Very Slightly Included Very Slightly Included Slightly Included Included

