



LABORATORY GROWN DIAMOND REPORT

July 28, 2025
 IGI Report Number **LG726501867**
 Description **LABORATORY GROWN DIAMOND**
 Shape and Cutting Style **PRINCESS CUT**
 Measurements **5.41 X 5.37 X 3.54 MM**

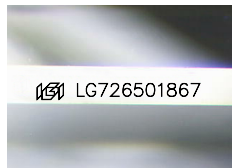
GRADING RESULTS

Carat Weight **0.86 CARAT**
 Color Grade **E**
 Clarity Grade **VS 1**

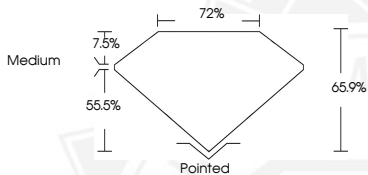
ADDITIONAL GRADING INFORMATION

Polish **EXCELLENT**
 Symmetry **EXCELLENT**
 Fluorescence **NONE**
 Inscription(s) **IGI LG726501867**

Comments: This Laboratory Grown Diamond was created by Chemical Vapor Deposition (CVD) growth process. Type IIa



Sample Image Used



July 28, 2025
 IGI Report Number **LG726501867**
PRINCESS CUT
LABORATORY GROWN DIAMOND
5.41 X 5.37 X 3.54 MM
 Carat Weight **0.86 CARAT**
 Color Grade **E**
 Clarity Grade **VS 1**
 Polish **EXCELLENT**
 Symmetry **EXCELLENT**
 Fluorescence **NONE**
 Inscription(s) **IGI LG726501867**

Comments: This Laboratory Grown Diamond was created by Chemical Vapor Deposition (CVD) growth process. Type IIa



July 28, 2025
 IGI Report Number **LG726501867**
PRINCESS CUT
LABORATORY GROWN DIAMOND
5.41 X 5.37 X 3.54 MM
 Carat Weight **0.86 CARAT**
 Color Grade **E**
 Clarity Grade **VS 1**
 Polish **EXCELLENT**
 Symmetry **EXCELLENT**
 Fluorescence **NONE**
 Inscription(s) **IGI LG726501867**

Comments: This Laboratory Grown Diamond was created by Chemical Vapor Deposition (CVD) growth process. Type IIa



THIS DOCUMENT WAS PRODUCED WITH THE FOLLOWING SECURITY MEASURES: SPECIAL DOCUMENT PAPER, INK SCREENS, WATERMARK, BACKGROUND DESIGNS, HOLOGRAM AND OTHER SECURITY FEATURES NOT LISTED AND DO EXCEED DOCUMENT SECURITY INDUSTRY GUIDELINES.