

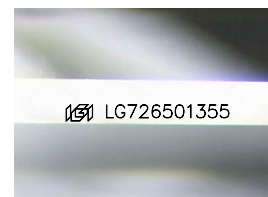
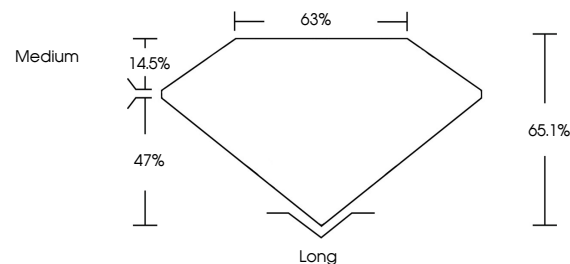


**ELECTRONIC COPY**

## LABORATORY GROWN DIAMOND REPORT

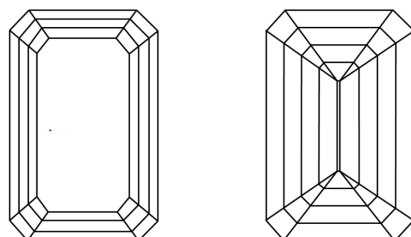
LG726501355  
Report verification at [igi.org](https://igi.org)

## PROPORTIONS



Sample Image Used

## CLARITY CHARACTERISTICS



## KEY TO SYMBOLS

Red symbols indicate internal characteristics.  
Green symbols indicate external characteristics.

## COLOR

D E F G H I J Faint Very Light Light

## CLARITY

IF      VWS<sup>1-2</sup>      VS<sup>1-2</sup>      SI<sup>1-2</sup>      I<sup>1-3</sup>

Internally Flawless	Very Very Slightly Included	Very Slightly Included	Slightly Included	Included
------------------------	--------------------------------	---------------------------	----------------------	----------

## LABORATORY GROWN DIAMOND REPORT



July 31, 2025

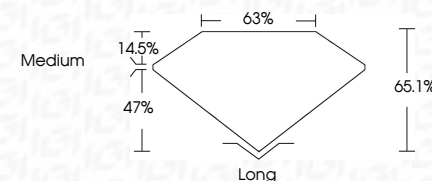
IGI Report Number **LG726501355**Description **LABORATORY GROWN DIAMOND**Shape and Cutting Style **EMERALD CUT**

Measurements 10.40 X 7.17 X 4.67 MM

## GRADING RESULTS

Carat Weight **3.59 CARATS**

Color Grade D

Clarity Grade **VVS 1**

### ADDITIONAL GRADING INFORMATION

Polish EXCELLENT

Symmetry **EXCELLENT**

Fluorescence NONI

Inscription(s)  LG726501355

Comments: This Laboratory Grown Diamond was created by Chemical Vapor Deposition (CVD) growth process.  
Type IIa



**www.igi.org**

© IGI 2020, International Gemological Institute

FD - 10 20



THIS DOCUMENT WAS PRODUCED WITH THE FOLLOWING SECURITY MEASURES: SPECIAL DOCUMENT PAPER, INK SCREENS, WATERMARK, BACKGROUND DESIGNS, HOLOGRAM AND OTHER SECURITY FEATURES NOT LISTED AND DO EXCEED DOCUMENT SECURITY INDUSTRY GUIDELINES

July 31, 2025  
 IGI Report No LG726501355  
 EMERALD CITY

10.40 X 7.17 X 4.67 MM	Carat Weight	3.69 CARATS
	Color Grade	D
	Clarity Grade	VVS 1
	Depth	66.1%
	Table	63%
	Grades	Medium
	Quiet	Long
	Polish	EXCELLENT
	Symmetry	EXCELLENT
	Fluorescence	NONE
	Measurements (mm)	10.40 X 7.17 X 4.67

**Comments:**  
This Laboratory Grown Diamond was  
created by Chemical Vapor Deposition  
(CVD) growth process.