



ELECTRONIC COPY

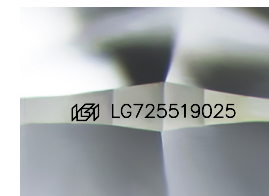
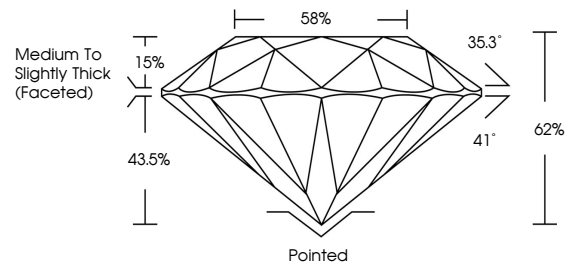
LG725519025
Report verification at igi.org



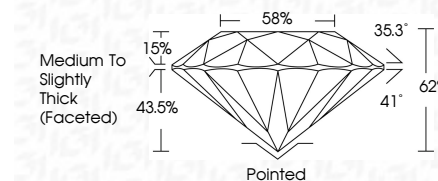
July 31, 2025
IGI Report Number LG725519025
Description LABORATORY GROWN DIAMOND
Shape and Cutting Style ROUND BRILLIANT
Measurements 9.24 - 9.28 X 5.74 MM
GRADING RESULTS
Carat Weight 3.05 CARATS
Color Grade D
Clarity Grade VVS 2
Cut Grade IDEAL

July 31, 2025
IGI Report Number LG725519025
Description LABORATORY GROWN DIAMOND
Shape and Cutting Style ROUND BRILLIANT
Measurements 9.24 - 9.28 X 5.74 MM
GRADING RESULTS
Carat Weight 3.05 CARATS
Color Grade D
Clarity Grade VVS 2
Cut Grade IDEAL

PROPORTIONS



Sample Image Used



ADDITIONAL GRADING INFORMATION

Polish EXCELLENT
Symmetry EXCELLENT
Fluorescence NONE
Inscription(s) IGI LG725519025

Comments: This Laboratory Grown Diamond was created by Chemical Vapor Deposition (CVD) growth process. Type IIa

COLOR

D E F G H I J Faint Very Light Light

CLARITY

IF VS 1-2 VS 1-2 SI 1-2 I 1-3
Internally Flawless Very Very Slightly Included Very Slightly Included Slightly Included Included

ADDITIONAL GRADING INFORMATION

Polish EXCELLENT
Symmetry EXCELLENT
Fluorescence NONE
Inscription(s) IGI LG725519025
Comments: This Laboratory Grown Diamond was created by Chemical Vapor Deposition (CVD) growth process. Type IIa



IGI

July 31, 2025
IGI Report No LG725519025
ROUND BRILLIANT
9.24 - 9.28 X 5.74 MM
3.05 CARATS
D
VVS 2
IDEAL
62%
58%
Medium To Slightly Thick (Faceted)
Pointed
EXCELLENT
EXCELLENT
NONE
IGI LG725519025
Comments: This Laboratory Grown Diamond was created by Chemical Vapor Deposition (CVD) growth process. Type IIa