



**LABORATORY GROWN DIAMOND REPORT**

August 8, 2025  
 IGI Report Number **LG725518321**  
 Description **LABORATORY GROWN DIAMOND**  
 Shape and Cutting Style **ROUND BRILLIANT**  
 Measurements **5.76 - 5.79 X 3.56 MM**

**GRADING RESULTS**

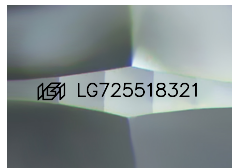
Carat Weight **0.73 CARAT**  
 Color Grade **FANCY PINK**  
 Clarity Grade **VVS 2**  
 Cut Grade **IDEAL**

**ADDITIONAL GRADING INFORMATION**

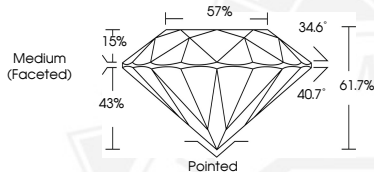
Polish **EXCELLENT**  
 Symmetry **EXCELLENT**  
 Fluorescence **SLIGHT**  
 Inscription(s) **IGI LG725518321**

Comments: This Laboratory Grown Diamond was created by Chemical Vapor Deposition (CVD) growth process. Indications of post-growth treatment.

Secondary color: Brown



Sample Image Used



August 8, 2025  
 IGI Report Number **LG725518321**  
 ROUND BRILLIANT  
 LABORATORY GROWN DIAMOND  
 5.76 - 5.79 X 3.56 MM  
 Carat Weight **0.73 CARAT**  
 Color Grade **FANCY PINK**  
 Clarity Grade **VVS 2**  
 Cut Grade **IDEAL**  
 Polish **EXCELLENT**  
 Symmetry **EXCELLENT**  
 Fluorescence **SLIGHT**  
 Inscription(s) **IGI LG725518321**

Comments: This Laboratory Grown Diamond was created by Chemical Vapor Deposition (CVD) growth process. Indications of post-growth treatment. Secondary color: Brown



August 8, 2025  
 IGI Report Number **LG725518321**  
 ROUND BRILLIANT  
 LABORATORY GROWN DIAMOND  
 5.76 - 5.79 X 3.56 MM  
 Carat Weight **0.73 CARAT**  
 Color Grade **FANCY PINK**  
 Clarity Grade **VVS 2**  
 Cut Grade **IDEAL**  
 Polish **EXCELLENT**  
 Symmetry **EXCELLENT**  
 Fluorescence **SLIGHT**  
 Inscription(s) **IGI LG725518321**

Comments: This Laboratory Grown Diamond was created by Chemical Vapor Deposition (CVD) growth process. Indications of post-growth treatment. Secondary color: Brown



THIS DOCUMENT WAS PRODUCED WITH THE FOLLOWING SECURITY MEASURES: SPECIAL DOCUMENT PAPER, INK SCREENS, WATERMARK, BACKGROUND DESIGNS, HOLOGRAM AND OTHER SECURITY FEATURES NOT LISTED AND DO EXCEED DOCUMENT SECURITY INDUSTRY GUIDELINES.