



August 8, 2025

IGI Report Number LG725518300
ROUND BRILLIANT
LABORATORY GROWN DIAMOND
4.84 - 4.90 X 2.96 MM

Carat Weight 0.43 CARAT
Color Grade FANCY INTENSE PINK
Clarity Grade VVS 2
Cut Grade IDEAL
Polish EXCELLENT
Symmetry EXCELLENT
Fluorescence SLIGHT
Inscription(s) IGI LG725518300

Comments: This Laboratory Grown Diamond was created by Chemical Vapor Deposition (CVD) growth process. Indications of post-growth treatment.

LABORATORY GROWN DIAMOND REPORT

August 8, 2025
IGI Report Number **LG725518300**
Description **LABORATORY GROWN DIAMOND**
Shape and Cutting Style **ROUND BRILLIANT**
Measurements **4.84 - 4.90 X 2.96 MM**

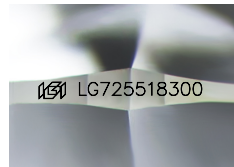
GRADING RESULTS

Carat Weight 0.43 CARAT
Color Grade FANCY INTENSE PINK
Clarity Grade VVS 2
Cut Grade IDEAL

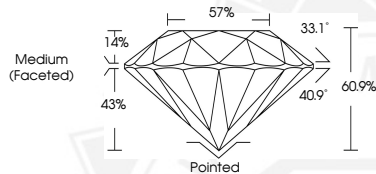
ADDITIONAL GRADING INFORMATION

Polish EXCELLENT
Symmetry EXCELLENT
Fluorescence SLIGHT
Inscription(s) IGI LG725518300

Comments: This Laboratory Grown Diamond was created by Chemical Vapor Deposition (CVD) growth process. Indications of post-growth treatment.



Sample Image Used



August 8, 2025

IGI Report Number LG725518300
ROUND BRILLIANT
LABORATORY GROWN DIAMOND
4.84 - 4.90 X 2.96 MM

Carat Weight 0.43 CARAT
Color Grade FANCY INTENSE PINK
Clarity Grade VVS 2
Cut Grade IDEAL
Polish EXCELLENT
Symmetry EXCELLENT
Fluorescence SLIGHT
Inscription(s) IGI LG725518300

Comments: This Laboratory Grown Diamond was created by Chemical Vapor Deposition (CVD) growth process. Indications of post-growth treatment.

THIS DOCUMENT WAS PRODUCED WITH THE FOLLOWING SECURITY MEASURES: SPECIAL DOCUMENT PAPER, INK SCREENS, WATERMARK, BACKGROUND DESIGNS, HOLOGRAM AND OTHER SECURITY FEATURES NOT LISTED AND DO EXCEED DOCUMENT SECURITY INDUSTRY GUIDELINES.