



**INTERNATIONAL
GEMOLOGICAL
INSTITUTE**

ELECTRONIC COPY

LG725507384
Report verification at igi.org

LABORATORY GROWN DIAMOND REPORT



July 28, 2025

IGI Report Number **LG725507384**

Description	LABORATORY GROWN DIAMOND
-------------	--------------------------

Shape and Cutting Style **PEAR BRILLIANT**

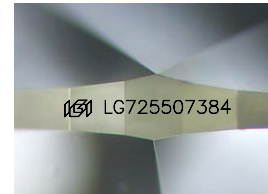
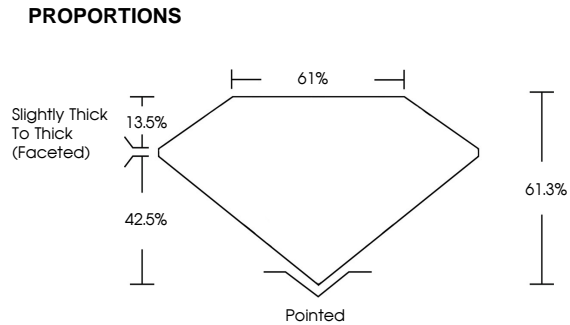
Measurements 10.98 X 7.06 X 4.33 MM

GRADING RESULTS

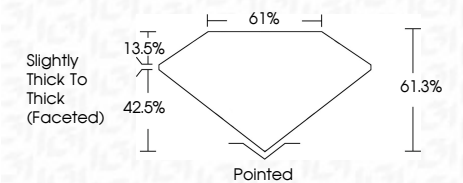
Carat Weight **2.03 CARATS**

Color Grade D

Clarity Grade VS 2



Sample Image Used



COLOR

D E F G H I J Faint Very Light Light

CLARITY

IF VS¹⁻² VS¹⁻² SI¹⁻² 1-3

Internally Flawless	Very Very Slightly Included	Very Slightly Included	Slightly Included	Included
------------------------	--------------------------------	---------------------------	----------------------	----------

ADDITIONAL GRADING INFORMATION

Polish **EXCELLENT**Symmetry **EXCELLENT**Fluorescence **NONE**Inscription(s)  LG725507384

Comments: This Laboratory Grown Diamond was created by Chemical Vapor Deposition (CVD) growth process.
Type IIa



IGI



© IGI 2020, International Gemological Institute

FD - 10 20



THIS DOCUMENT WAS PRODUCED WITH THE FOLLOWING SECURITY MEASURES: SPECIAL DOCUMENT PAPER, INK SCREENS, WATERMARK, BACKGROUND DESIGNS, HOLOGRAM AND OTHER SECURITY FEATURES NOT LISTED AND DO EXCEED DOCUMENT SECURITY INDUSTRY GUIDELINES

www.igi.org

July 28, 2025
GI Report No LG725507384
PEAR BRILLIANT

10K YELLOW	10K YELLOW
PURK-87	PURK-87
Color Weight	2.08 CARATS
Color Grade	D
Clarity Grade	VS 2
Depth	61.9%
Table	61%
Girdle	Slightly Thick To Thick (Faceted)
Culet	Pointed
Polish	EXCELLENT
Symmetry	EXCELLENT
Fluorescence	NONE
Inscription(s)	1691 LG726507384

Comments:
This Laboratory Grown Diamond was
created by Chemical Vapor Deposition
(CVD) growth process,
type IIa