



ELECTRONIC COPY

LABORATORY GROWN DIAMOND REPORT

LG725504948
Report verification at igi.org

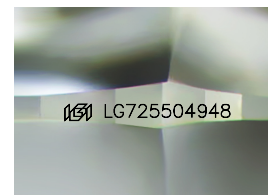
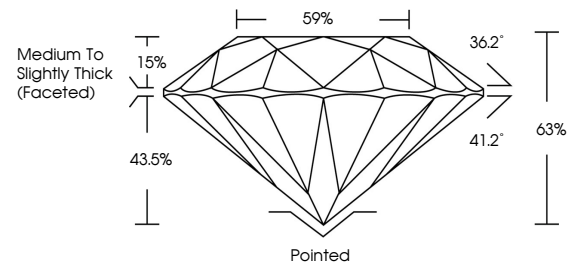
| | |
|-------------------------|--------------------------|
| July 28, 2025 | |
| IGI Report Number | LG725504948 |
| Description | LABORATORY GROWN DIAMOND |
| Shape and Cutting Style | ROUND BRILLIANT |
| Measurements | 7.38 - 7.43 X 4.66 MM |
| GRADING RESULTS | |
| Carat Weight | 1.59 CARAT |
| Color Grade | D |
| Clarity Grade | VVS 2 |
| Cut Grade | EXCELLENT |

ADDITIONAL GRADING INFORMATION

| | |
|----------------|---|
| Polish | EXCELLENT |
| Symmetry | EXCELLENT |
| Fluorescence | NONE |
| Inscription(s) |  LG725504948 |

Comments: As Grown - No indication of post-growth treatment.
This Laboratory Grown Diamond was created by High Pressure High Temperature (HPHT) growth process.
Type II

PROPORTIONS



Sample Image Used

COLOR

D E F G H I J Faint Very Light Light

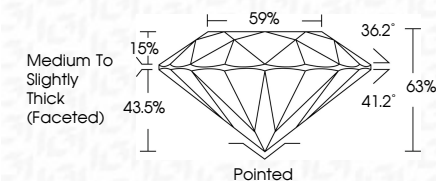
CLARITY

| IF | VS ¹⁻² | VS ¹⁻² | SI ¹⁻² | I ¹⁻³ |
|---------------------|-----------------------------|------------------------|-------------------|------------------|
| Internally Flawless | Very Very Slightly Included | Very Slightly Included | Slightly Included | Included |

LABORATORY GROWN DIAMOND REPORT



| | |
|-------------------------|--------------------------|
| July 28, 2025 | |
| IGI Report Number | LG725504948 |
| Description | LABORATORY GROWN DIAMOND |
| Shape and Cutting Style | ROUND BRILLIANT |
| Measurements | 7.38 - 7.43 X 4.66 MM |
| GRADING RESULTS | |
| Carat Weight | 1.59 CARAT |
| Color Grade | D |
| Clarity Grade | VVS 2 |
| Cut Grade | EXCELLENT |



ADDITIONAL GRADING INFORMATION

| | |
|--|----------------------------|
| Polish | EXCELLENT |
| Symmetry | EXCELLENT |
| Fluorescence | NONE |
| Inscription(s) | (G) LG725504948 |
| <p>Comments: As Grown - No indication of post-growth treatment.</p> <p>This Laboratory Grown Diamond was created by High Pressure High Temperature (HPHT) growth process.</p> <p>Type II</p> | |



IG



© IGI 2020, International Gemological Institute

FD - 10 20

www.igi.org



THIS DOCUMENT WAS PRODUCED WITH THE FOLLOWING SECURITY MEASURES: SPECIAL DOCUMENT PAPER, INK SCREENS, WATERMARK, BACKGROUND DESIGNS, HOLOGRAM AND OTHER SECURITY FEATURES NOT LISTED AND DO EXCEED DOCUMENT SECURITY INDUSTRY GUIDELINE

July 28, 2025
GI Report No LG725504948
ROUND BRILLIANT

| | | |
|-----------------------|--------------|---|
| 7.38 - 7.43 X 4.65 MM | 1.59 CARAT | D |
| Color | Carat Weight | |
| Clarity | Grade | |
| Depth | Carat Weight | |
| Table | Grade | |
| Girdle | Carat Weight | |
| Culet | Grade | |
| Polish | Carat Weight | |
| Symmetry | Grade | |
| Fluorescence | Carat Weight | |
| Comments | Carat Weight | |

Comments:
As Grown - No indication of post-growth treatment.