



**ELECTRONIC COPY**

## LABORATORY GROWN DIAMOND REPORT

July 30, 2025	
IGI Report Number	LG724599421
Description	LABORATORY GROWN DIAMOND
Shape and Cutting Style	HEXAGONAL MODIFIED BRILLIANT
Measurements	16.90 X 8.22 X 5.81 MM

## GRADING RESULTS

Carat Weight	5.50 CARATS
Color Grade	G
Clarity Grade	VVS 1

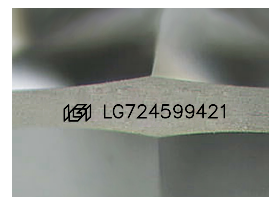
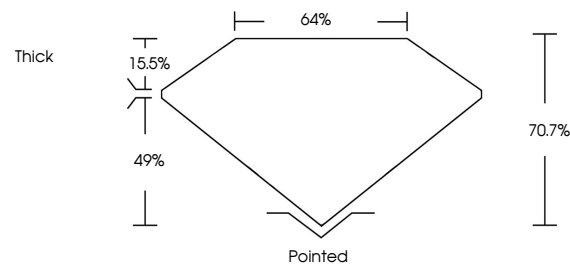
### ADDITIONAL GRADING INFORMATION

Polish	EXCELLENT
Symmetry	EXCELLENT
Fluorescence	NONE
Inscription(s)	 LG724599421

Comments: This Laboratory Grown Diamond was created by Chemical Vapor Deposition (CVD) growth process.  
Type IIa

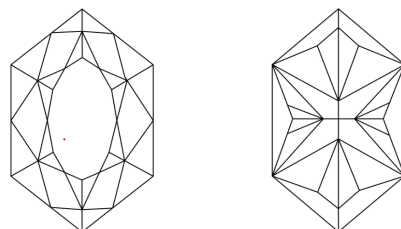
LG724599421  
Report verification at [igi.org](https://igi.org)

## PROPORTIONS



Sample Image Used

## CLARITY CHARACTERISTICS



## KEY TO SYMBOLS

Red symbols indicate internal characteristics.  
Green symbols indicate external characteristics.

## COLOR

D E F G H I J Faint Very Light Light

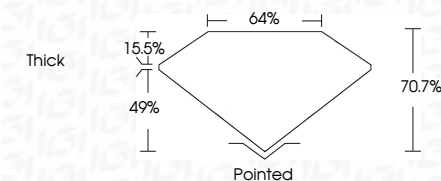
## CLARITY

IF	VVS <sup>1-2</sup>	VS <sup>1-2</sup>	SI <sup>1-2</sup>	I <sup>1-3</sup>
Internally Flawless	Very Very Slightly Included	Very Slightly Included	Slightly Included	Included

## LABORATORY GROWN DIAMOND REPORT



July 30, 2025	
IGI Report Number	LG724599421
Description	LABORATORY GROWN DIAMOND
Shape and Cutting Style	HEXAGONAL MODIFIED BRILLIANT
Measurements	16.90 X 8.22 X 5.81 MM
GRADING RESULTS	
Carat Weight	5.50 CARATS
Color Grade	G
Clarity Grade	VVS 1



### ADDITIONAL GRADING INFORMATION

Polish	EXCELLENT
Symmetry	EXCELLENT
Fluorescence	NONE
Inscription(s)	<del>LG</del> LG72459942
<p>Comments: This Laboratory Grown Diamond was created by Chemical Vapor Deposition (CVD) growth process.</p> <p>Type IIa</p>	



**www.igi.org**

© IGI 2020, International Gemological Institute

FD - 10 20



THIS DOCUMENT WAS PRODUCED WITH THE FOLLOWING SECURITY MEASURES: SPECIAL DOCUMENT PAPER, INK SCREENS, WATERMARK, BACKGROUND DESIGNS, HOLOGRAM AND OTHER SECURITY FEATURES NOT LISTED AND DO EXCEED DOCUMENT SECURITY INDUSTRY GUIDELINES

<p>JUN 30, 2025</p> <p>GI Report No. LG72659421</p> <p>HEXAGONAL MODIFIED BRILLIANT</p>	<p>16.90 X 8.22 X 5.81 MM</p> <p>Color Grade</p> <p>Clarity Grade</p> <p>Depth</p> <p>Table</p> <p>Girdle</p>	<p>5.50 CARATS</p> <p>G</p> <p>VS 1</p> <p>70.7%</p> <p>64%</p> <p>Thick</p>	<p>Pointed</p> <p>EXCELLENT</p> <p>EXCELLENT</p> <p>NONE</p> <p>(#) LG72659421</p>	<p>Comments:</p> <p>This Laboratory Grown Diamond was created by Chemical Vapor Deposition (CVD) growth process.</p> <p>Type IIA</p>
-----------------------------------------------------------------------------------------	---------------------------------------------------------------------------------------------------------------	------------------------------------------------------------------------------	------------------------------------------------------------------------------------	--------------------------------------------------------------------------------------------------------------------------------------