



ELECTRONIC COPY

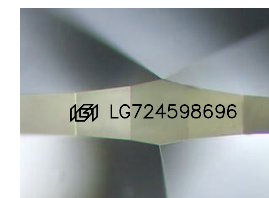
LG724598696
Report verification at igi.org



July 29, 2025
IGI Report Number **LG724598696**
Description **LABORATORY GROWN DIAMOND**

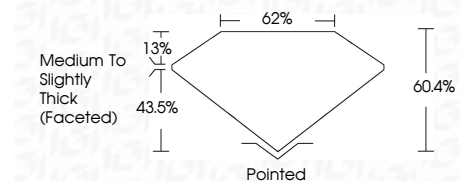
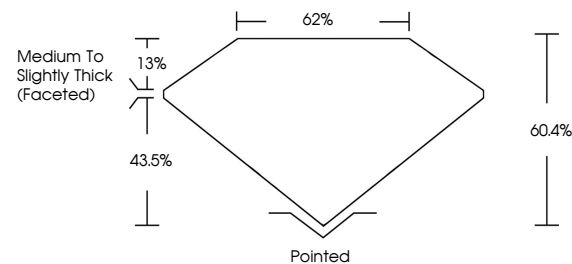
Shape and Cutting Style **OVAL BRILLIANT**
Measurements **17.76 X 12.41 X 7.50 MM**

GRADING RESULTS
Carat Weight **10.37 CARATS**
Color Grade **E**
Clarity Grade **VVS 2**

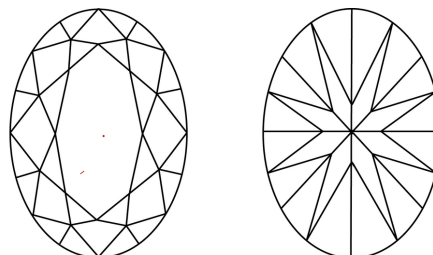


Sample Image Used

PROPORTIONS



CLARITY CHARACTERISTICS



KEY TO SYMBOLS

Red symbols indicate internal characteristics.
Green symbols indicate external characteristics.

COLOR

D E F G H I J Faint Very Light Light

CLARITY

IF	VS ¹⁻²	VS ¹⁻²	SI ¹⁻²	I ¹⁻³
Internally Flawless	Very Very Slightly Included	Very Slightly Included	Slightly Included	Included

ADDITIONAL GRADING INFORMATION

Polish **EXCELLENT**
Symmetry **EXCELLENT**
Fluorescence **NONE**
Inscription(s) **(IGI) LG724598696**
Comments: This Laboratory Grown Diamond was created by Chemical Vapor Deposition (CVD) growth process. Type IIa



IGI

July 29, 2025
IGI Report No LG724598696
OVAL BRILLIANT
17.76 X 12.41 X 7.50 MM
Carat Weight 10.37 CARATS
Color Grade E
Clarity Grade VVS 2
Depth 60.4%
Table 62%
Girdle Medium to Slightly Thick (Faceted)
Culet Pointed
Polish EXCELLENT
Symmetry EXCELLENT
Fluorescence NONE
Inscription(s) (IGI) LG724598696
Comments: This Laboratory Grown Diamond was created by Chemical Vapor Deposition (CVD) growth process. Type IIa