



INTERNATIONAL GEMOLOGICAL INSTITUTE

ELECTRONIC COPY

LABORATORY GROWN DIAMOND REPORT

August 4, 2025

IGI Report Number

LG724596039

Description

LABORATORY GROWN DIAMOND

Shape and Cutting Style

ROUND BRILLIANT

Measurements

3.65 - 3.69 X 2.27 MM

GRADING RESULTS

Carat Weight

0.19 CARAT

Color Grade

FANCY VIVID BLUE

Clarity Grade

VS 2

Cut Grade

IDEAL

ADDITIONAL GRADING INFORMATION

Polish

VERY GOOD

Symmetry

VERY GOOD

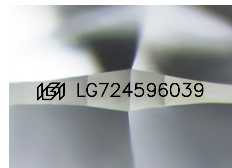
Fluorescence

NONE

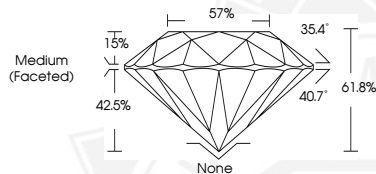
Inscription(s)

IGI LG724596039

Comments: This Laboratory Grown Diamond was created by High Pressure High Temperature (HPHT) growth process. Indications of post-growth treatment.



Sample Image Used



August 4, 2025

IGI Report Number LG724596039

ROUND BRILLIANT

LABORATORY GROWN DIAMOND

3.65 - 3.69 X 2.27 MM

Carat Weight 0.19 CARAT

Color Grade FANCY VIVID BLUE

Clarity Grade VS 2

Cut Grade IDEAL

Polish VERY GOOD

Symmetry VERY GOOD

Fluorescence NONE

Inscription(s) IGI LG724596039

Comments: This Laboratory Grown Diamond was created by High Pressure High Temperature (HPHT) growth process. Indications of post-growth treatment.



August 4, 2025

IGI Report Number LG724596039

ROUND BRILLIANT

LABORATORY GROWN DIAMOND

3.65 - 3.69 X 2.27 MM

Carat Weight 0.19 CARAT

Color Grade FANCY VIVID BLUE

Clarity Grade VS 2

Cut Grade IDEAL

Polish VERY GOOD

Symmetry VERY GOOD

Fluorescence NONE

Inscription(s) IGI LG724596039

Comments: This Laboratory Grown Diamond was created by High Pressure High Temperature (HPHT) growth process. Indications of post-growth treatment.



THIS DOCUMENT WAS PRODUCED WITH THE FOLLOWING SECURITY MEASURES: SPECIAL DOCUMENT PAPER, INK SCREENS, WATERMARK, BACKGROUND DESIGNS, HOLOGRAM AND OTHER SECURITY FEATURES NOT LISTED AND DO EXCEED DOCUMENT SECURITY INDUSTRY GUIDELINES.

For terms & conditions and to verify this report, please visit www.igi.org