



INTERNATIONAL GEMOLOGICAL INSTITUTE

ELECTRONIC COPY

LABORATORY GROWN DIAMOND REPORT

August 5, 2025

IGI Report Number

LG724596005

Description

LABORATORY GROWN DIAMOND

Shape and Cutting Style

ROUND BRILLIANT

Measurements

3.54 - 3.59 X 2.19 MM

GRADING RESULTS

Carat Weight

0.17 CARAT

Color Grade

FANCY VIVID BLUE

Clarity Grade

SI 1

Cut Grade

VERY GOOD

ADDITIONAL GRADING INFORMATION

Polish

VERY GOOD

Symmetry

GOOD

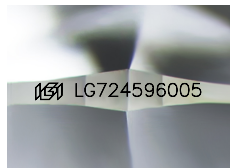
Fluorescence

NONE

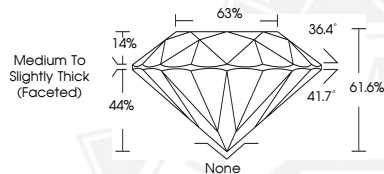
Inscription(s)

IGI LG724596005

Comments: This Laboratory Grown Diamond was created by High Pressure High Temperature (HPHT) growth process. Indications of post-growth treatment.



Sample Image Used



THIS DOCUMENT WAS PRODUCED WITH THE FOLLOWING SECURITY MEASURES: SPECIAL DOCUMENT PAPER, INK SCREENS, WATERMARK, BACKGROUND DESIGNS, HOLOGRAM AND OTHER SECURITY FEATURES NOT LISTED AND DO EXCEED DOCUMENT SECURITY INDUSTRY GUIDELINES.

For terms & conditions and to verify this report, please visit www.igi.org



August 5, 2025

IGI Report Number LG724596005

ROUND BRILLIANT

LABORATORY GROWN DIAMOND

3.54 - 3.59 X 2.19 MM

Carat Weight 0.17 CARAT

Color Grade FANCY VIVID BLUE

Clarity Grade SI 1

Cut Grade VERY GOOD

Polish VERY GOOD

Symmetry GOOD

Fluorescence NONE

Inscription(s) IGI LG724596005

Comments: This Laboratory Grown Diamond was created by High Pressure High Temperature (HPHT) growth process. Indications of post-growth treatment.



August 5, 2025

IGI Report Number LG724596005

ROUND BRILLIANT

LABORATORY GROWN DIAMOND

3.54 - 3.59 X 2.19 MM

Carat Weight 0.17 CARAT

Color Grade FANCY VIVID BLUE

Clarity Grade SI 1

Cut Grade VERY GOOD

Polish VERY GOOD

Symmetry GOOD

Fluorescence NONE

Inscription(s) IGI LG724596005

Comments: This Laboratory Grown Diamond was created by High Pressure High Temperature (HPHT) growth process. Indications of post-growth treatment.