



INTERNATIONAL GEMOLOGICAL INSTITUTE

ELECTRONIC COPY

LABORATORY GROWN DIAMOND REPORT

August 6, 2025
IGI Report Number **LG724595932**
Description **LABORATORY GROWN DIAMOND**
Shape and Cutting Style **HEART MODIFIED BRILLIANT**
Measurements **3.45 X 3.70 X 2.24 MM**

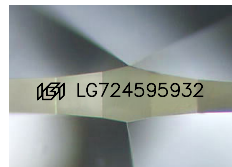
GRADING RESULTS

Carat Weight **0.22 CARAT**
Color Grade **LIGHT PINKISH BROWN**
Clarity Grade **VS 2**

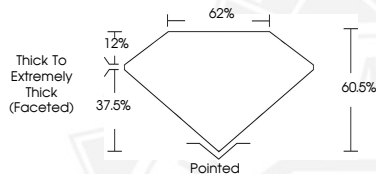
ADDITIONAL GRADING INFORMATION

Polish **VERY GOOD**
Symmetry **VERY GOOD**
Fluorescence **SLIGHT**
Inscription(s) **IGI LG724595932**

Comments: This Laboratory Grown Diamond was created by Chemical Vapor Deposition (CVD) growth process. Indications of post-growth treatment.



Sample Image Used



August 6, 2025

IGI Report Number **LG724595932**
HEART MODIFIED BRILLIANT
LABORATORY GROWN DIAMOND
3.45 X 3.70 X 2.24 MM

Carat Weight **0.22 CARAT**
Color Grade **LIGHT PINKISH BROWN**

Clarity Grade **VS 2**
Polish **VERY GOOD**
Symmetry **VERY GOOD**
Fluorescence **SLIGHT**
Inscription(s) **IGI LG724595932**

Comments: This Laboratory Grown Diamond was created by Chemical Vapor Deposition (CVD) growth process. Indications of post-growth treatment.



August 6, 2025

IGI Report Number **LG724595932**
HEART MODIFIED BRILLIANT
LABORATORY GROWN DIAMOND
3.45 X 3.70 X 2.24 MM

Carat Weight **0.22 CARAT**
Color Grade **LIGHT PINKISH BROWN**

Clarity Grade **VS 2**
Polish **VERY GOOD**
Symmetry **VERY GOOD**
Fluorescence **SLIGHT**
Inscription(s) **IGI LG724595932**

Comments: This Laboratory Grown Diamond was created by Chemical Vapor Deposition (CVD) growth process. Indications of post-growth treatment.



THIS DOCUMENT WAS PRODUCED WITH THE FOLLOWING SECURITY MEASURES: SPECIAL DOCUMENT PAPER, INK SCREENS, WATERMARK, BACKGROUND DESIGNS, HOLOGRAM AND OTHER SECURITY FEATURES NOT LISTED AND DO EXCEED DOCUMENT SECURITY INDUSTRY GUIDELINES.

For terms & conditions and to verify this report, please visit www.igi.org